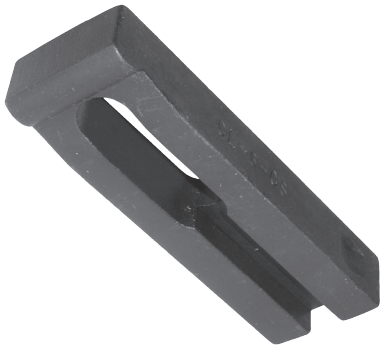


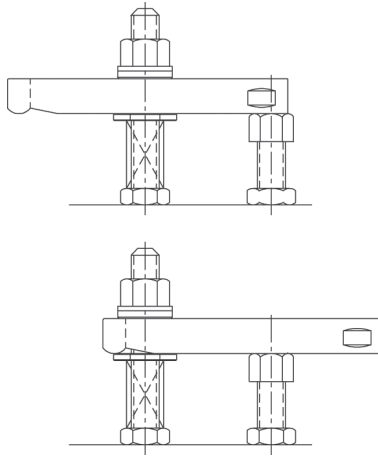
SLOTTED-HEEL CLAMP STRAPS

STEEL: 1018, CARBURIZED-HARDENED, BLACK OXIDE FINISH
 STAINLESS STEEL: 300 SERIES

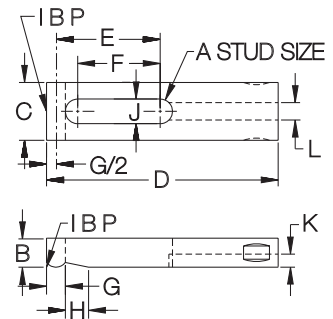


**Steel and
Stainless Steel**

Popular Clamp Strap with a slot underneath to allow sliding it straight back for clear loading. Two drill spots on the sides provide a secure grip for retracting the clamp. Available in steel for 1/4-20 (M6) to 3/4-10 (M20) stud sizes, or stainless steel for #10-32 to 3/8-16 stud sizes. Each size is available in several strap lengths.



INFO+: See page 263 for complete assemblies using these Clamp Straps.



STRAPS — STEEL

PART NO.	A	B	C	D	E	F	G	H	J	K	L
CL-0-CS	1/4-20 or M6	3/8	5/8	2	27/32	19/32	1/4	11/32	9/32	5/32	3/16
CL-1-CS				2-1/2	1-3/32	13/16					
CL-1A-CS	5/16-18 or M8	1/2	3/4	2-1/2	27/32	1/2	5/16	7/16	11/32	7/32	1/4
CL-1B-CS				3	1-11/32	1					
CL-2-CS	3/8-16 or M10	1/2	1-1/8	3	1-9/32	7/8	13/32	1/2	27/64	9/32	3/8
CL-3A-CS				3-1/2	1-17/32	1-1/8					
CL-3-CS				4	1-25/32	1-3/8					
CL-4-CS				5	2-9/32	1-7/8					
CL-5-CS				6	2-25/32	2-3/8					
CL-6A-CS	1/2-13 or M12	5/8	1-1/4	3-1/2	1-1/2	1-1/32	13/32	1/2	17/32	9/32	3/8
CL-6-CS				4	1-3/4	1-9/32					
CL-8-CS				5	2-1/4	1-25/32					
CL-10-CS				6	2-3/4	2-9/32					
CL-15A-CS				4	1-11/16	1-3/32					
CL-16-CS	5/8-11 or M16	7/8	1-1/2	5	2-3/16	1-19/32	1/2	19/32	21/32	9/32	1/2
CL-18-CS				6	2-11/16	2-3/32					
CL-18A-CS				6-1/2	2-15/16	2-11/32					
CL-19-CS	3/4-10 or M20	1	1-3/4	6	2-5/8	2	1/2	19/32	13/16	5/16	1/2
CL-21-CS				7	3-1/8	2-9/16					
CL-22A-CS				8	3-5/8	3-1/8					

STRAPS — STAINLESS, MINIATURE

CL-17215	#10-32	1/4	1/2	1-1/2	21/32	15/32	3/16	5/16	7/32	3/32	7/32
CL-17325	1/4-20	3/8	5/8	2-1/2	1-1/8	15/16	1/4	3/8	9/32	1/8	9/32
CL-17540	3/8-16	1/2	1	4	1-13/16	1-1/2	3/8	1/2	13/32	3/16	13/32

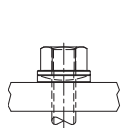
SLOTTED-HEEL CLAMP STRAPS

INFO+: SEE PAGES 100, 109, 263, 311-316, 318-319, 326, 327-330 FOR MATERIAL SPECIFICATIONS

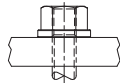


Steel

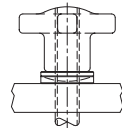
A complete clamp-strap assembly using a slotted-heel strap from (INFO+ page 262). Select any of the six nut/knob combinations shown below by adding the appropriate suffix to the part number. Other Stud and Clamp Rest lengths are available (order pieces individually).



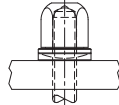
Spherical Nut & Washer
CL-xx-SHA-1



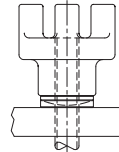
Flange Nut
CL-xx-SHA-2



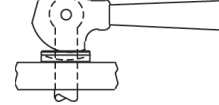
Hand Knob with Spherical Washer
CL-xx-SHA-4



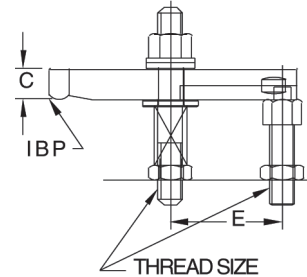
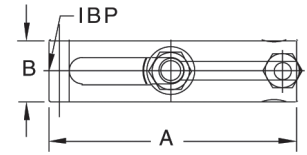
Acorn Nut with Spherical Washer
CL-xx-SHA-5



Bar Knob with Spherical Washer*
CL-xx-SHA-6



Cam Handle with Spherical Washer



ASSEMBLIES — STEEL (INCH)

PART NO.	THREAD SIZE	A	B	C	E	CLAMP STRAP	CLAMP REST	SPRING	FLAT WASHER	STUD
CL-0-SHA-x	1/4-20	2	5/8	3/8	27/32	CL-0-CS	CL-1-CR	CL-5-SPG	CL-7-FW	CL-1/4-20x2.50-STUD
CL-1-SHA-x		2-1/2			1-3/32	CL-1-CS				
CL-1A-SHA-x	5/16-18	2-1/2	3/4	1/2	1-1/4	CL-1A-CS	CL-1A-CR	CL-6-SPG	CL-14-FW	CL-5/16-18x3.00-STUD
CL-1B-SHA-x		3			1-11/32	CL-1B-CS				
CL-2-SHA-x	3/8-16	3	1-1/8	1/2	1-9/32	CL-2-CS	CL-2-CR	CL-7-SPG	CL-1-FW	CL-3/8-16x3.00-STUD
CL-3-SHA-x		3-1/2			1-17/32	CL-3A-CS				
CL-4-SHA-x		4			1-25/32	CL-3-CS				
CL-6-SHA-x		5			2-9/32	CL-4-CS				
CL-8-SHA-x		6			2-25/32	CL-5-CS				
CL-9-SHA-x		3-1/2			1-1/2	CL-6A-CS				
CL-10-SHA-x	1/2-13	4	1-1/4	5/8	1-3/4	CL-6-CS	CL-4-CR	CL-9-SPG	CL-2-FW	CL-1/2-13x4.00-STUD
CL-12-SHA-x		5			2-1/4	CL-8-CS				
CL-14-SHA-x		6			2-3/4	CL-10-CS				
CL-20-SHA-x		4			1-11/16	CL-15A-CS				
CL-22-SHA-x	5/8-11	5	1-1/2	7/8	2-3/16	CL-16-CS	CL-5-CR	CL-11-SPG	CL-3-FW	CL-5/8-11x4.50-STUD
CL-24-SHA-x		6			2-11/16	CL-18-CS				
CL-25-SHA-x		6-1/2			2-15/16	CL-18A-CS				
CL-27-SHA-x		6			2-5/8	CL-19-CS				
CL-29-SHA-x	3/4-10	7	1-3/4	1	3-1/8	CL-21-CS	CL-8-CR	CL-13-SPG	CLM-10-FW	CL-3/4-10x5.00-STUD
CL-31-SHA-x		8			3-5/8	CL-22A-CS				

ASSEMBLIES — STEEL (METRIC)

PART NO.	THREAD SIZE	THREAD PITCH (mm)	A (mm)	B (mm)	C (mm)	E (mm)	CLAMP STRAP	CLAMP REST	CLAMP SPRING	FLAT WASHER	CLAMPING STUD	JAM NUT	SPHERICAL NUT & WASHER
CLM-0-SHA-1	M6	1	51	16	9.5	21.5	CL-0-CS	CLM-1-CR	CL-5-SPG	CL-7-FW	CLM-6 x 65-STUD	CLM-6-JN	CLM-6-SNW
CLM-1-SHA-1			63.5			28	CL-1-CS						
CLM-1A-SHA-1	M8	1.25	76	19	12.5	32	CL-1A-CS	CLM-1A-CR	CL-6-SPG	CL-14-FW	CLM-8 x 80-STUD	CLM-8-JN	CLM-8-SNW
CLM-1B-SHA-1						34	CL-1B-CS						
CLM-2-SHA-1	M10	1.5	101.5	28.5	12.5	32.5	CL-2-CS	CLM-2-CR	CL-7-SPG	CL-1-FW	CLM-10 x 80-STUD	CLM-10-JN	CLM-10-SNW
CLM-3-SHA-1						39	CL-3A-CS						
CLM-4-SHA-1						45	CL-3-CS						
CLM-6-SHA-1						58	CL-4-CS						
CLM-8-SHA-1						70.5	CL-5-CS						
CLM-9-SHA-1						38	CL-6A-CS						
CLM-10-SHA-1	M12	1.75	101.5	32	16	44.5	CL-6-CS	CLM-4-CR	CL-9-SPG	CL-2-FW	CLM-12 x 95-STUD	CLM-12-JN	CLM-12-SNW
CLM-12-SHA-1						57	CL-8-CS						
CLM-14-SHA-1						70	CL-10-CS						
CLM-20-SHA-1						43	CL-15A-CS						
CLM-22-SHA-1	M16	2	127	38	22	55.5	CL-16-CS	CLM-5-CR	CL-11-SPG	CL-3-FW	CLM-16 x 110-STUD	CLM-16-JN	CLM-16-SNW
CLM-24-SHA-1						68.5	CL-18-CS						
CLM-25-SHA-1						75	CL-18A-CS						
CLM-27-SHA-1						66.5	CL-19-CS						
CLM-29-SHA-1	M20	2.5	178	44.5	25.5	79.5	CL-21-CS	CLM-8-CR	CL-13-SPG	CLM-10-FW	CLM-20 x 125-STUD	CLM-20-JN	CLM-20-SNW
CLM-31-SHA-1						92	CL-22A-CS						

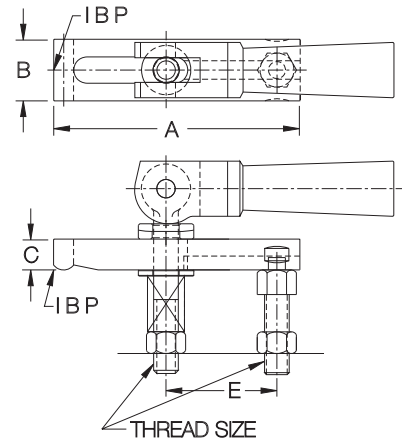
SLOTTED-HEEL CLAMP STRAPS

INFO+: SEE PAGES 100, 109, 263, 311-316, 318-319, 326, 327-330 FOR MATERIAL SPECIFICATIONS



**Straddle Cam
Steel**

A complete clamp-strap assembly using (INFO+) a slotted-heel strap from page 262 along with a Double Cam and Eyebolt. Other Eyebolt and Clamp Rest lengths are available (order pieces individually).



ASSEMBLIES — STRADDLE CAM, STEEL (INCH)

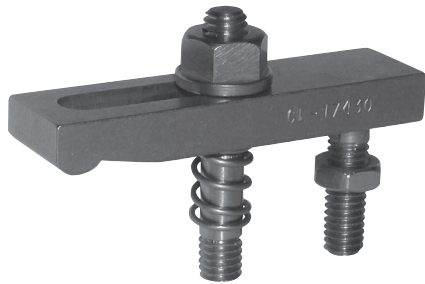
PART NO.	THREAD SIZE	A	B	C	E	CLAMP STRAP	CLAMP REST	SPRING	EYE BOLT	CAM HANDLE AND CLEVIS PIN	FLAT WASHER	SPHERICAL WASHER
CL-0-SCA	1/4-20	2	5/8	3/8	27/32	CL-0-CS	CL-1-CR	CL-5-SPG	CL-25-EB	CL-11-CH	CL-7-FW	CL-1-SW
CL-1-SCA		2-1/2			1-3/32	CL-1-CS				CL-610-CLVP		
CL-1A-SCA	5/16-18	2-1/2	3/4	1/2	1-1/4	CL-1A-CS	CL-1A-CR	CL-6-SPG	CL-31-EB	CL-11A-CH	CL-14-FW	CL-11-SW
CL-1B-SCA		3			1-11/32	CL-1B-CS				CL-810-CLVP		
CL-2-SCA	3/8-16	3	1-1/8	1/2	1-9/32	CL-2-CS	CL-2-CR	CL-7-SPG	CL-38-EB	CL-12-CH	CL-1-FW	CL-2-SW
CL-2A-SCA		3-1/2			1-17/32	CL-3A-CS						
CL-3-SCA		4			1-25/32	CL-3-CS						
CL-4-SCA		5			2-9/32	CL-4-CS						
CL-5-SCA		6			2-25/32	CL-5-CS						
CL-6A-SCA		3-1/2			1-1/2	CL-6A-CS						
CL-6-SCA	1/2-13	4	1-1/4	5/8	1-3/4	CL-6-CS	CL-4-CR	CL-9-SPG	CL-50-EB	CL-13-CH	CL-2-FW	CL-3-SW
CL-8-SCA		5			2-1/4	CL-8-CS						
CL-9A-SCA		6			2-3/4	CL-10-CS						
CL-17-SCA		4			1-11/16	CL-15A-CS						
CL-19-SCA	5/8-11	5	1-1/2	7/8	2-3/16	CL-16-CS	CL-6-CR	CL-11-SPG	CL-62-EB	CL-14-CH	CL-3-FW	CL-4-SW
CL-21-SCA		6			2-11/16	CL-18-CS						
CL-22-SCA		6-1/2			2-15/16	CL-18A-CS						
CL-24-SCA		6			2-5/8	CL-19-CS						
CL-26-SCA	3/4-10	7	1-3/4	1	3-1/8	CL-21-CS	CL-8-CR	CL-13-SPG	CL-75-EB	CL-15-CH	CL-4-FW	CL-5-SW
CL-28-SCA		8			3-5/8	CL-22A-CS						

ASSEMBLIES — STRADDLE CAM, STEEL (METRIC)

CLM-0-SCA	M6	2	5/8	3/8	27/32	CL-0-CS	CLM-1-CR	CL-5-SPG	CLM-25A-EB	CLM-11-CH	CL-7-FW	CL-1-SW
CLM-1-SCA	M6	2-1/2	5/8	3/8	1-3/32	CL-1-CS	CLM-1-CR	CL-5-SPG	CLM-25A-EB	CLM-616-CLVP	CL-7-FW	CL-1-SW
CLM-2-SCA		3			1-9/32	CL-2-CS						
CLM-2A-SCA	M10	3-1/2	1-1/8	1/2	1-17/32	CL-3A-CS	CLM-2-CR	CL-7-SPG	CLM-40-EB	CLM-12-CH	CL-1-FW	CL-2-SW
CLM-3-SCA		4			1-25/32	CL-3-CS						
CLM-4-SCA		5			2-9/32	CL-4-CS						
CLM-5-SCA		6			2-25/32	CL-5-CS						
CLM-6A-SCA		3-1/2			1-1/2	CL-6A-CS						
CLM-6-SCA		M12			4	1-1/4						
CLM-8-SCA	5		2-1/4	CL-8-CS								
CLM-9A-SCA	6		2-3/4	CL-10-CS								
CLM-17-SCA	4		1-11/16	CL-15A-CS								
CLM-19-SCA	M16	5	1-1/2	7/8	2-3/16	CL-16-CS	CLM-5-CR	CL-11-SPG	CLM-62-EB	CLM-14-CH	CL-3-FW	CL-4-SW
CLM-21-SCA		6			2-11/16	CL-18-CS						
CLM-22-SCA		6-1/2			2-15/16	CL-18A-CS						
CLM-24-SCA		6			2-5/8	CL-19-CS						
CLM-26-SCA	M20	7	1-3/4	1	3-1/8	CL-21-CS	CLM-8-CR	CL-13-SPG	CLM-76A-EB	CLM-15-CH	CLM-10-FW	CLM-20-SW
CLM-28-SCA		8			3-5/8	CL-22A-CS						

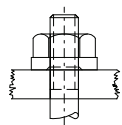
SLOTTED-HEEL CLAMP STRAPS

INFO+: SEE PAGES 123, 263, 311-316, 318-319, 329-330 FOR MATERIAL SPECIFICATIONS



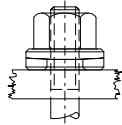
**Stainless Steel
(Miniature)**

A complete clamp-strap assembly using (**INFO+**) a stainless steel slotted-heel strap from page 262. Select any of the four nut/knob combinations shown below by adding the appropriate suffix to the part number. Fixture Stud has a thread-locking interference thread at the bottom end to install permanently in a fixture plate.



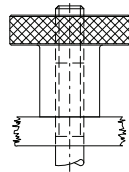
Flange Nut

CL-xxxx-1



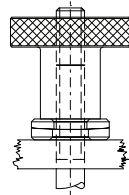
Spherical Nut
and Washer

CL-xxxx-2



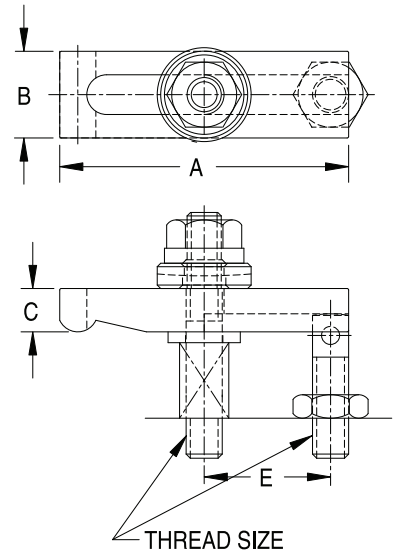
Knurled
Knob

CL-xxxx-3



Knurled Knob
and Spherical
Washer

CL-xxxx-4



7

ASSEMBLIES — STAINLESS, MINIATURE (INCH)

PART NO.	THREAD SIZE	A	B	C	E	CLAMP STRAP	CLAMP REST	SPRING	FLAT WASHER	STUD	JAM NUT
CL-2715-x	#10-32	1-1/2	1/2	1/4	21/32	CL-17215	CL-13410	CL-2430.7	CL-254	CL-11415	CL-3-FJN-S
CL-2825-x	1/4-20	2-1/2	5/8	3/8	1-1/8	CL-17325	CL-13515	CL-2440.7	CL-255	CL-11520	CL-4-JN-S
CL-2925-x	5/16-18	2-1/2	3/4	3/8	1-3/32	CL-17425	CL-13615	CL-2450.7	CL-256	CL-11620	CL-5-JN-S
CL-3040-x	3/8-16	3	1	1/2	1-5/16	CL-17530	CL-13717	CL-2461.0	CL-257	CL-11725	CL-6-JN-S