

Leveling Devices

Original Series Socket Style with Delrin® Base Stainless Steel

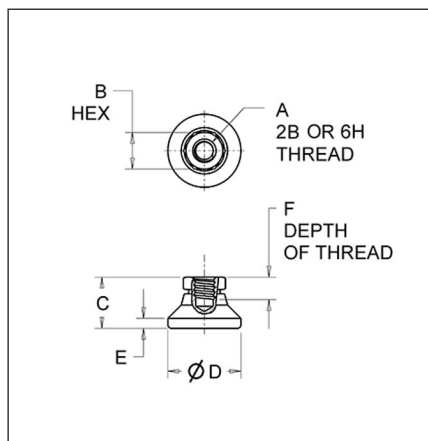
These original series socket style leveling devices in stainless steel feature a Delrin® base that protects floors and surface finishes, and provides superior resistance to repeated impacts, solvents, moisture and temperatures up to 190°F. The stainless steel design offers further protection from rust and corrosion.

Typical Uses

- Data storage equipment
- Large medical equipment
- Material handling equipment
- Industrial workstations
- Industrial machines

Special Features

- Hardened ball
- Integrally machined hex
- Protects floor/surface finish
- Large diameter base support
- 15° swivel off centerline
- Stainless steel resists rust and corrosion



Original Series Socket Style w/Delrin® Base - Stainless Steel

Part No.	Max Load (Lbs.)	A	B	C	D	E	F	ROHS	CAD
SSNP298B 	150	10-32	3/8	17/32	3/4	7/64	15/64	<input checked="" type="checkbox"/>	SSNP298B 
SSNP300B 	200	1/4-20	1/2	45/64	1	5/32	5/16	<input checked="" type="checkbox"/>	SSNP300B 
SSNP304B 	300	3/8-16	5/8	7/8	1-1/4	3/16	3/8	<input checked="" type="checkbox"/>	SSNP304B 
SSNP306B 	700	1/2-13	3/4	1-1/8	1-7/8	1/4	7/16	<input checked="" type="checkbox"/>	SSNP306B 
SSNP308B 	1,200	5/8-11	7/8	1-1/4	2-1/2	5/16	7/16	<input checked="" type="checkbox"/>	SSNP308B 
SSNP310B 	1,800	3/4-10	1-1/16	1-1/2	3	1/2	5/8	<input checked="" type="checkbox"/>	SSNP310B 
SSNP312B 	2,400	1-8	1-3/8	1-7/8	4	13/32	13/16	<input checked="" type="checkbox"/>	SSNP312B 

Product not available in metric.

Proud to be [ISO:50001](#) and ISO:9001 Certified

Cage Code: 01226



Copyright © 2024 Vliet Inc. | All Rights Reserved | A Division of  | HUTCHINSON®