

Leveling Devices

Original Series Socket Style Stainless Steel

Vlier's original series socket style leveling devices in stainless steel swivel 15° off the centerline to adjust to uneven surfaces and level machine tools, electronic racks, benches, data storage, power generation, machine centers and others. The all-stainless steel design offers maximum protection from rust and corrosion.

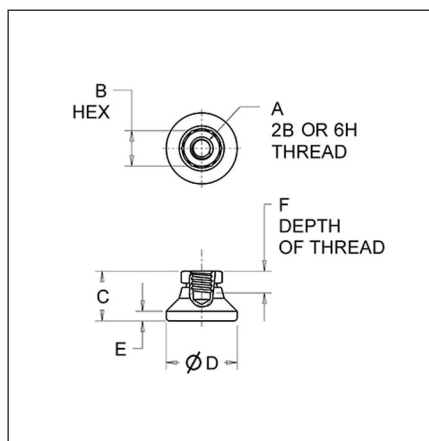
The fine thread option is perfect for applications where a more sensitive leveling adjustment is needed.

Typical Uses

- Data storage equipment
- Large medical equipment
- Material handling equipment
- Industrial workstations
- Industrial machines

Special

- Hardened ball
- Stud with integrally machined hex
- Large diameter base support
- 15° swivel off centerline
- Stainless steel resists rust and corrosion
- Fine thread option



Original Series Socket Style – Stainless Steel

Part No.	Max Load (Lbs.)	A	B	C	D	E	F	ROHS	CAD
SSP298B 	700	10-32	3/8	17/32	3/4	7/64	15/64	<input checked="" type="checkbox"/>	SSP298B 
SSP300B 	1,100	1/4-20	1/2	45/64	1	5/32	5/16	<input checked="" type="checkbox"/>	SSP300B 
SSP304B 	3,750	3/8-16	5/8	7/8	1-1/4	3/16	3/8	<input checked="" type="checkbox"/>	SSP304B 
SSP306B 	5,000	1/2-13	3/4	1-1/8	1-7/8	1/4	7/16	<input checked="" type="checkbox"/>	SSP306B 
SSP308B 	6,000	5/8-11	7/8	1-1/4	2-1/2	5/16	7/16	<input checked="" type="checkbox"/>	SSP308B 
SSP310B 	7,200	3/4-10	1-1/16	1-1/2	3	1/2	5/8	<input checked="" type="checkbox"/>	SSP310B 
SSP312B 	22,000	1-8	1-3/8	1-7/8	4	13/32	13/16	<input checked="" type="checkbox"/>	SSP312B 

Original Series Socket Style – Stainless Steel

Part No.	Max Load (kg.)	A	B	C	D	E	F	ROHS	Part No.
SSPM12B 	2,273	M12 x 1.75	19	29	48	6	11.0	<input checked="" type="checkbox"/>	SSPM12B 
SSPM16B 	2,727	M16 x 2.0	24	32	64	8	11.0	<input checked="" type="checkbox"/>	SSPM16B 
SSPM20B 	3,273	M20 x 2.5	30	38	76	13	15.7	<input checked="" type="checkbox"/>	SSPM20B 
SSPM24B 	9,979	M24 x 3.0	35	48	102	10	20.5	<input checked="" type="checkbox"/>	SSPM24B 

Proud to be [ISO:50001](#) and [ISO:9001](#) Certified

Cage Code: 01226



Copyright © 2024 Vlier Inc. | All Rights Reserved | A Division of  | HUTCHINSON®