

DuroTech™ -Series

Durable Air Driven Power Unit Technology
For High Cycle Industrial Applications

- Simple Operation
- Highly Durable – built for high use applications
- High Flow Rate
- User Adjustable Outlet Pressure
- Automatically Maintains Pressure
- 3 Different Output Pressure Models
- Includes 4 Station D03 Manifold



ENERPAC 

Air Driven Pump

Shown: WAP30008D with two VMMD-001 Manual Valves



▶ WAP-Series air-driven pump

These heavy-duty air driven pumps are well suited for use in production applications.

Includes four-station DO3 manifold. Includes pressure-rated cover plates for operation of fewer than four stations.

Optional P&T cross-over plate for use of a remote manifold.

Shown: WAP3008D with two VAT0710D air-operated two-position poppet valves



Shown: WAP30008D with four VP03-11 directional valves



Industrial, high-cycle, high-flow hydraulic supply in an economical air-powered unit

- Heavy-duty construction, including steel reservoir and protective steel shroud
- Long-life, fully serviceable air motor
- Dual pump action offers high oil capacity and smooth flow
- On-demand stall / restart operation automatically maintains system pressure
- Adjustable hydraulic pressure through built-in air filter / regulator
- Requires no air lubrication
- Reduced noise level (75dBA)
- Standard four-station DO3 manifold

Key Features

- Extremely durable pump element
- Four-station DO3 manifold with cover plates for unused stations
- Air filter / regulator with built-in air pressure gauge
- 1.8-Gallon all-metal reservoir with easy-access drain plug
- Easy-to-read oil level sight glass



Air shut-off valve



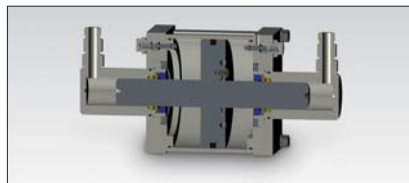
Convenient fill port



Pressure control



Air pressure gauge

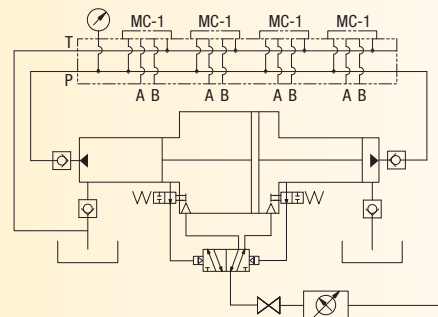


Dual pump with extremely durable element



Removable Metal Shroud

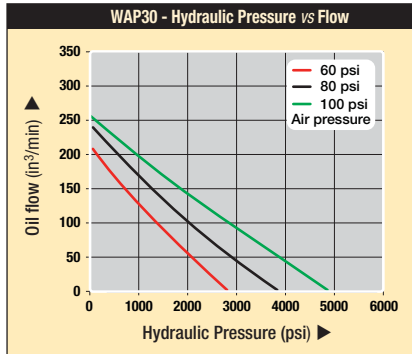
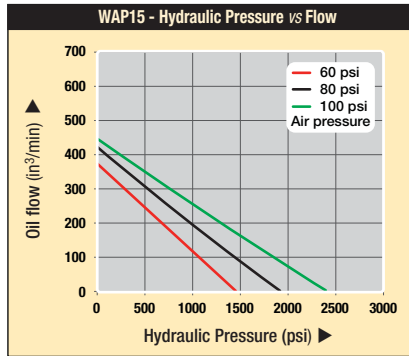
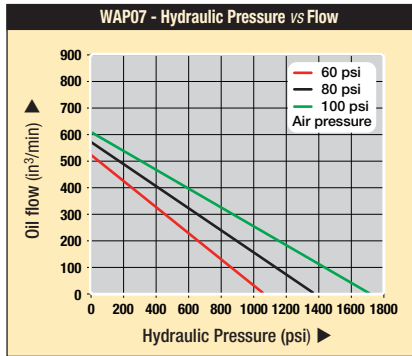
Internal Schematic



Operation:

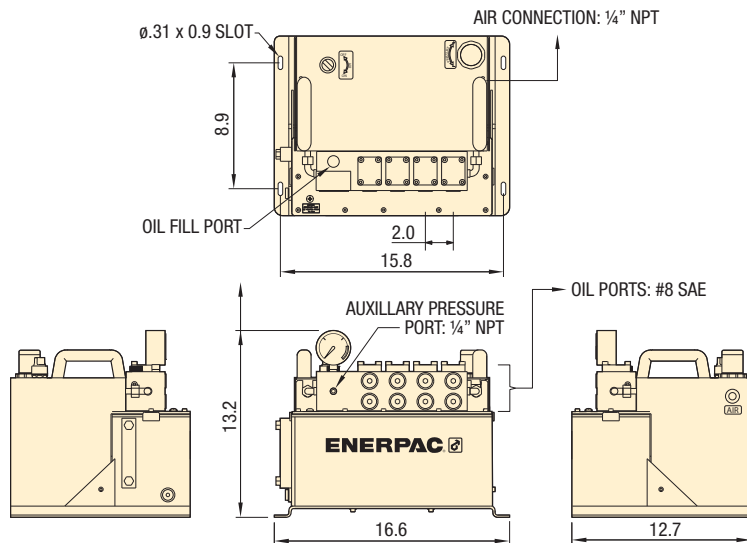
Shop air is connected to the built-in pressure regulator where the operator can adjust the air pressure, that in turn sets the maximum hydraulic oil pressure. The air is ported through a built-in shut-off valve to the air pump. With the shut-off valve open, the pump automatically turns on and off to obtain and then maintain the customer selected pressure.

Oil Flow vs. Oil Pressure vs. Air Pressure



NOTE: Performance is significantly diminished below 50 psi. Performance may vary compared to listed values due to seal friction, internal pressure drops and manufacturing tolerances.

Product dimensions in inches []



Product selection

Model number	Ratio	Max Rated Hydraulic Pressure ¹⁾	Air Pressure Range	Max Press. at 100 psi Air ²⁾	Max Hyd. Flow at 100 psi Air ³⁾	Max Air Consumption at 100 psi Air	Usable Oil Capacity	Internal Hyd. Safety Relief Valve Setting	lbs
		psi	psi	psi	in ³ /min	scfm	in ³	psi	
WAP07008D	16:1	1920	30-120	1595	612	24	415	2000	71
WAP15008D	23:1	2760	30-120	2320	465	24	415	3000	71
WAP30008D	48:1	5280	30-110	4785	252	20	415	5500	71

- Based on 120 psi air pressure for the WAP07 and WAP 15 models and 110 psi air pressure for the WAP30 model
- At 0 hydraulic flow
- At 0 psi hydraulic pressure
- Available MC-2 Cross Over Cover Plate to covert A&B outlet ports to P&T for use with remote valves
- Pump element and repair kits are available - contact Enerpac for details
- Valve manifold: 4 station DO3
- Comes with 4 MC-1 DO3 Cover plates fo isolate unused valve stations
- Air relief valve set at 145 psi

www.enerpacwh.com

Oil Flow: 612-252 in³/min*

Pressure: 1595-4785 psi*

Sound Level: 75 dBA*

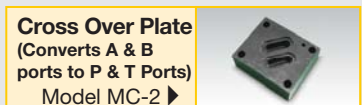
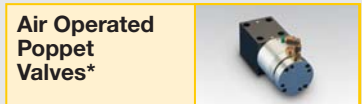
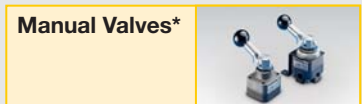
Air: Max 24 scfm*

Reservoir: 1.8 gal

Ratios: 16:1, 23:1, 48:1

* @ 100 psi air

Options/Accessories



*Refer to our website: www.enerpacwh.com

■ Shown with Solenoid Operated Poppet Directional Valves.



DuroTech™ -Series, Air Driven Pump



The Full Enerpac Workholding Line

Cylinders

- Swing
- Link
- Pull
- Block
- Threaded Body
- Manifold Mount
- Work Supports
- Universal
- Hollow Plunger
- Positive Locking
- Pull Down
- Collet-Lok™

Power Sources

- Air/Oil Boosters
- Turbo Air Driven
- Electric Pumps
- Hand Pumps
- Hydraulic Intensifiers
- Wand and Booster
- Screw Pump

Valves

- Manual
- Solenoid
- Sequence
- Pilot Operated Check
- Flow Control
- Pressure Reducing

System Components

- Accumulators
- Accumulator Pallet Units
- Manual Coupler Systems
- Rotary Unions
- Gauges
- Inline Filters
- Fittings
- Tubing
- Manifolds
- Hoses
- Couplers
- AutoCouplers
- Pressure Switches
- Wireless Pressure Monitoring

CAD Files

- Available at www.enerpac.com

Application Assistance

- Contact Enerpac at 1-414-747-8315

Enerpac Worldwide Locations

Africa (South Africa and other English speaking African countries)
ENERPAC AFRICA (PTY) Ltd.
5 Bauhinia Avenue
Cambridge Office Park, Block E
Highveld Techno Park, Centurion
0157, Republic of South-Africa
T +0027 (0) 12 940 0656
sales-za@enerpac.com

Australia and New Zealand
Actuant Australia Ltd.
P.O. Box 6867, Wetherill Park,
NSW 1851
Block V Unit 3, Regents Park
Estate
391 Park Road, Regents Park,
NSW 2143
Australia
T +61 287 177 200
F +61 297 438 648
sales@enerpac.com.au

Brazil
Power Packer do Brasil Ltda.
Rua Luiz Lawrie Reid, 548
09930-760 - Diadema (SP)-Brasil
T +55 11 5687 2211
Toll Free: 0800 891 5770
vendabrasil@enerpac.com

China (Taicang)
Actuant (China) Industries Co.Ltd.
No.6 Nanjing East Road,
Taicang Economic Dep Zone
Jiangsu, China
T +86 0512 5328 7500
F +86 0512 5335 9690
Toll Free: +86 400 885 0369
sales-cn@enerpac.com

Enerpac Heavy Lifting Technology B.V.
Spinelstraat 15, 7554 TS Hengelo
P.O. Box 421, 7550 AK Hengelo
The Netherlands
T +31 74 242 20 45
F +31 74 243 03 38

France, Switzerland, North Africa and French speaking African countries
ENERPAC
Une division d'ACTUANT
France S.A.S.
Zone Orlytech, Bâtiment 516
1 allée du commandant Mouchotte
CS 40351
91550 Paray-Vieille-Poste, France
T +33 1 60 13 68 68
F +33 1 69 20 37 50
sales-fr@enerpac.com

Germany and Austria
Actuant GmbH
P.O. Box 300113
D-40401 Düsseldorf
Willstätterstrasse 13
D-40549 Düsseldorf, Germany
T +49 211 471 490
F +49 211 471 49 28
sales-de@enerpac.com

India
Actuant India Private Limited
No. 10, Bellary Road, Sadashivanagar
Bangalore, Karnataka 560 080, India
T +91 80 3928 9000
Info@enerpac.com.in

Italy
ENERPAC S.p.A.
Via Canova 4
20094 Corsico (Milano) Italy
T +39 02 4861 111
F +39 02 4860 1288
sales-it@enerpac.com

Japan
Enerpac Co., Ltd.
Besshocho 85-7
Kita-ku, Saitama-shi 331-0821,
Japan
T +81 48 662 4911
F +81 48 662 4955
sales-jp@enerpac.com

Middle East, Egypt and Libya
ENERPAC Middle East FZE
Plot M00737m 1242nd Street
Jebel Ali Free Zone North
P.O. Box 18004, Dubai
United Arab Emirates
T +971 (0)4 8872686
F +971 (0)4 8872687
sales-ua@enerpac.com

Norway
Sales Office Norway
Unit 524, Nydalsveien 28, 0484 Oslo
P.O. Box 4814 Nydalen 0422 Oslo
Norway
Tel: +47 91 578 300
insidesalesnorway@enerpac.com

Russia
Rep. office Enerpac
Russian Federation
Admiral Makarova Street 8
125212 Moscow, Russia
T +7 495 98090 91
F +7 495 98090 92
sales-ru@enerpac.com

Southeast Asia, Hong Kong and Taiwan
Actuant Asia Pte Ltd.
83 Joo Koon Circle,
Singapore 629109
T +65 68 63 0611
F +65 64 84 5669
Toll Free: +1800 363 7722
sales-sg@enerpac.com

South Korea
Actuant Korea Ltd.
3Ba 717, Shihwa Industrial Complex
Jungwang-Dong, Shihung-Shi,
Kyunggi-Do,
Republic of Korea 429-450
T +82 31 434 4506
F +82 31 434 4507
sales-kr@enerpac.com

Spain and Portugal
ENERPAC SPAIN, S.L.
Avenida Valdelaparra N° 27 3ª - L8
28108 Alcobendas
(Madrid) Spain
T +34 91 884 86 06
F +34 91 884 86 11
sales-es@enerpac.com

Sweden, Denmark, Finland and Iceland
Enerpac Scandinavia AB
Kopparlundsvägen 14,
721 30 Västerås, Sweden
T +46 (0) 771 415000
scandinavianinquiries@enerpac.com

The Netherlands, Belgium, Luxembourg, Central and Eastern Europe, Baltic States, Greece, Turkey and CIS countries
ENERPAC B.V.
Galvanistraat 115, 6716 AE Ede
P.O. Box 8097, 6710 AB Ede
The Netherlands
T +31 318 535 911
F +31 318 535 848
sales-nl@enerpac.com

United Kingdom and Ireland
ENERPAC UK Ltd.,
5 Coopies Field
Morpeh, Northumberland
NE61 6JR, England
Tel: +44 1670 5010 00
sales-uk@enerpac.com

USA, Latin America and Caribbean
ENERPAC World Headquarters
P.O. Box 3241
Milwaukee, WI 53201-3241 USA
N86 W12500 Westbrook Crossing
Menomonee Falls, Wisconsin
53051
T +1 262 293 1600
F +1 262 293 7036
User inquiries:
+1 800 433 2766
Distributor inquiries/orders:
+1 800 558 0530
+1 800 628 0490
Technical inquiries:
techservices@enerpac.com
sales-us@enerpac.com

05/17



Workholding CAD files ON-LINE!

TRY IT OUT FOR YOURSELF!

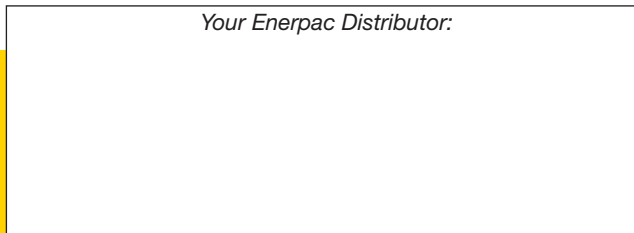
www.enerpacwh.com

3D Formats

- IGES
- STEP

Enerpac is proud to introduce a new way to view Workholding products and download CAD files. From the Enerpac website you are able to quickly locate the right product for your specific application and move to our download site to select from over 2,000 3D CAD files.

The shopping cart format makes downloading multiple files for transfer to your computer fast and easy.



Your Enerpac Distributor:

www.enerpacwh.com

ENERPAC
POWERFUL SOLUTIONS. GLOBAL FORCE.