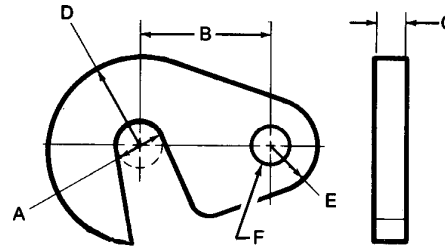


## Swing "C" Washers

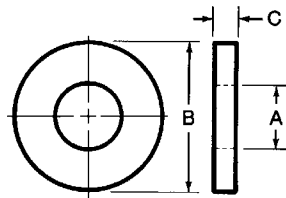


- Black Oxide Finish
- Case Hardened
- 1144 Material
- Shoulder screw furnished with each washer
- Shoulder diameter of the screw allows pivotal motion

Part No.	A	B	C	D	E	F	Shoulder Screw Size	Weight (lbs/100pcs)
<b>42850</b>	13/32	1	1/4	3/4	3/8	3/8	5/16-18	15
<b>42851</b>	17/32	1-1/4	5/16	1	1/2	3/8	5/16-18	33
<b>42852</b>	21/32	1-1/2	3/8	1-1/8	9/16	1/2	3/8-16	49
<b>42853</b>	25/32	1-3/4	1/2	1-1/4	5/8	1/2	3/8-16	74

## Hardened Flat Washers

- Black Oxide Finish and Case Hardened (steel washers only)
- Material: C1010 Steel or 303 Stainless Steel
- Many sizes conform to TCMAI standards
- Large quantities quoted upon request



### English

Steel Part No.	Stainless Steel Part No.	Stud Size	A	B	C	Weight (lbs/100pcs)
<b>42600</b>	<b>42660</b>	#10	13/64	1/2	3/32	0.5
<b>42601</b>	<b>42661</b>	1/4	9/32	5/8	1/8	1
<b>42602</b>	<b>42662</b>	5/16	11/32	3/4	1/8	2
<b>42603</b>	<b>42663</b>	3/8	13/32	7/8	1/8	2
<b>42604</b>	<b>42664</b>	7/16	15/32	1	1/8	3
<b>42605</b>	<b>42665</b>	1/2	17/32	1-1/8	1/8	3
<b>42606</b>	<b>42666</b>	5/8	21/32	1-3/8	1/8	4
<b>42607</b>	<b>42667</b>	3/4	25/32	1-5/8	5/32	8
<b>42608</b>	<b>42668</b>	7/8	29/32	1-3/4	5/32	8
<b>42609</b>	<b>42669</b>	1	1-1/32	2	3/16	12
<b>42610</b>	<b>42670</b>	1-1/8	1-5/32	2-1/4	7/32	19
<b>42611</b>	<b>42671</b>	1-1/4	1-9/32	2-1/2	9/32	28
<b>42612</b>	<b>42672</b>	#4	1/8	5/16	5/64	0.5
<b>42613</b>	<b>42673</b>	#6	5/32	3/8	5/64	0.5
<b>42614</b>	<b>42674</b>	#8	3/16	7/16	5/64	0.5

### Metric

Part No.	Stud Size	A	B	C	Weight (lbs/100pcs)
<b>63601</b>	M6	7	16	3	1
<b>63602</b>	M8	9	19	3	2
<b>63603</b>	M10	11	22	3	3
<b>63605</b>	M12	13	29	3	3
<b>63606</b>	M16	17	35	3	4
<b>63608</b>	M20	22	44	5	8
<b>63609</b>	M24	26	51	4	12

## Heavy Duty Hardened Flat Washers

- Black Oxide Finish
- Case Hardened
- C1010 Material
- Large quantities quoted upon request



### English

Part No.	Stud Size	A	B	C	Weight (lbs/100pcs)
<b>42619</b>	1/4	9/32	5/8	3/16	2
<b>42620</b>	5/16	11/32	3/4	3/16	2
<b>42621</b>	3/8	13/32	7/8	3/16	3
<b>42622</b>	7/16	15/32	1	3/16	4
<b>42623</b>	1/2	17/32	1-1/8	3/16	4
<b>42624</b>	5/8	21/32	1-3/8	3/16	6
<b>42625</b>	3/4	25/32	1-5/8	1/4	11
<b>42626</b>	7/8	29/32	1-3/4	1/4	11
<b>42627</b>	1	1-1/32	2	9/32	18

### Metric

Part No.	Stud Size	A	B	C	Weight (lbs/100pcs)
<b>63619</b>	M6	7	16	5	2
<b>63620</b>	M8	9	19	5	2
<b>63621</b>	M10	11	22	5	3
<b>63623</b>	M12	13	29	5	4
<b>63624</b>	M16	17	35	5	6
<b>63626</b>	M20	22	44	6	12
<b>63627</b>	M24	26	51	7	18

