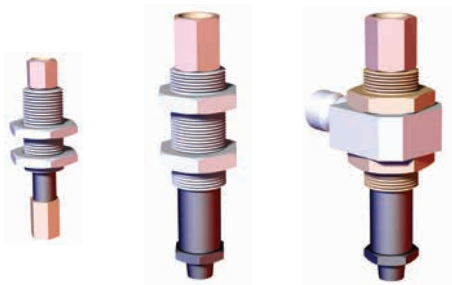


SPRING-LOADED CUP MOUNTS

Vacuum Products | Dimensions | Technical Specifications

LC Bulk Head Style Micro Series Level Compensators

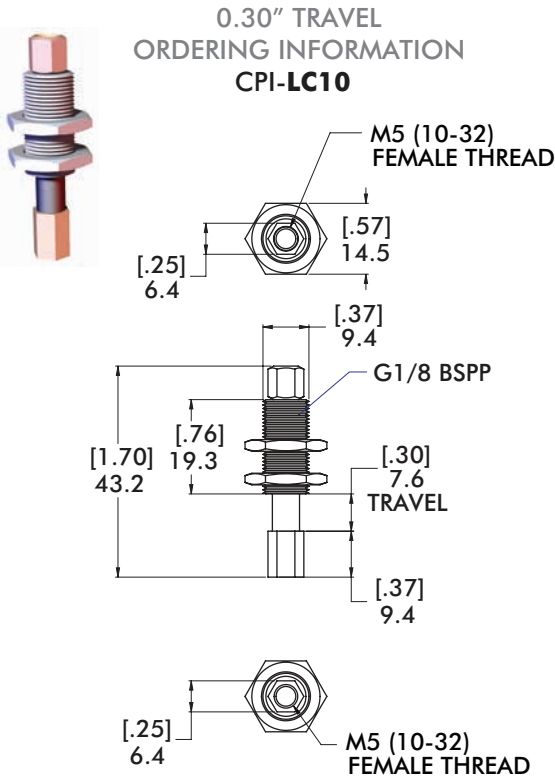


Specifications:
Material: Aluminum

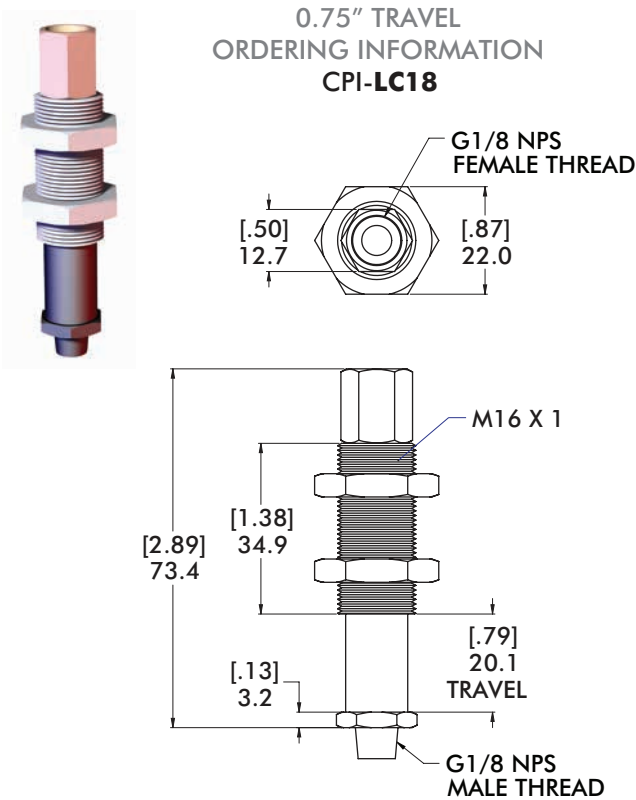
Features:

- M5 or G mounting threads and vacuum ports.

Note: To be used in vertical orientations only.

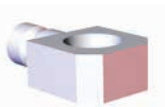


Weight
5.7 g [0.2 oz.]



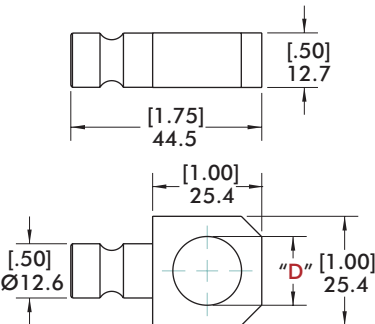
Weight
28.3 g [1.0 oz.]

LCM Series Mount



CPI-LCM-10-"D"

Weight
23 g [0.8 oz.]



SPRING-LOADED CUP MOUNTS

Vacuum Products | Dimensions | Technical Specifications

Features:

- Available in three different travel lengths.
- NPT or G mounting threads and vacuum ports.

Specifications:

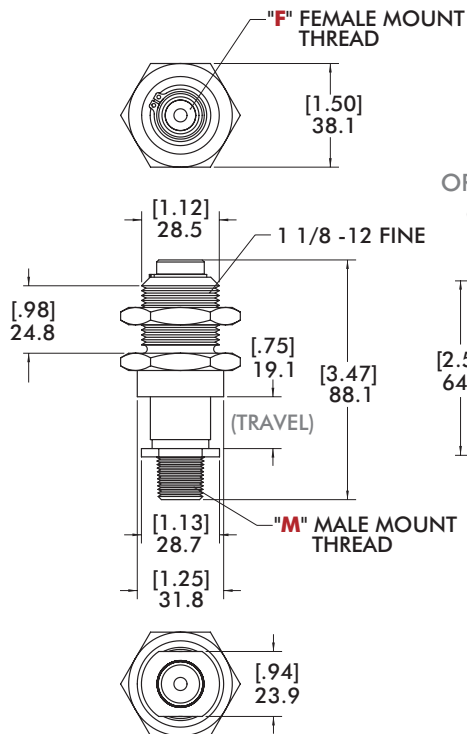
Material: Aluminum

RCM Bulkhead Style Standard Travel

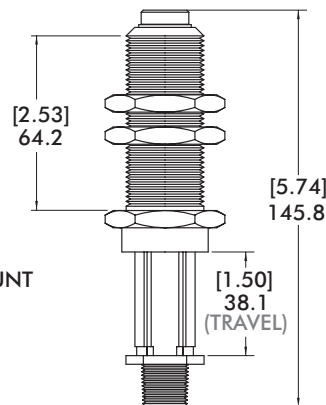


Note: To be used in vertical orientations only.

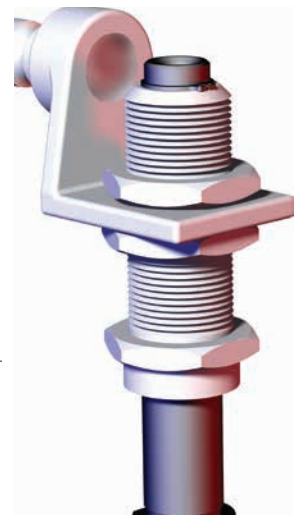
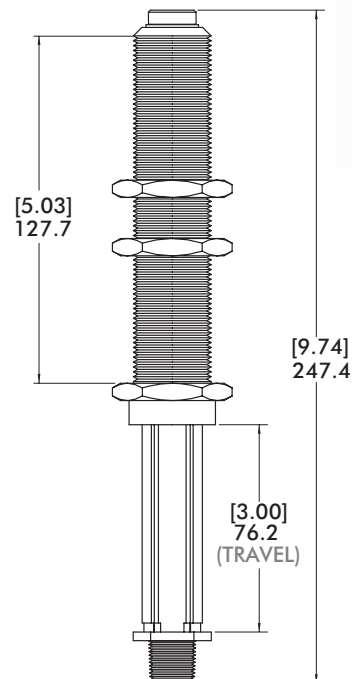
0.75" TRAVEL ORDERING INFORMATION CPI-RCM-30



1.50" TRAVEL ORDERING INFORMATION CPI-RCM-150-U14-NR



3.00" TRAVEL ORDERING INFORMATION CPI-RCM-300-U14-NR



CPI-RCM-150-U14-NR
Shown with CPI-SAP-30

Bulkhead Mount - CPI-RCM-XXX

Version	Mount Thread M	Vacuum Port F
Imperial	3/8" NPT Male	1/4" NPT

Weight

.75" Travel = 142g [5 oz]
1.50" Travel = 227g [8 oz]
3.00" Travel = 340g [12 oz]

SPRING-LOADED CUP MOUNTS

Vacuum Products | Dimensions | Technical Specifications | Ordering Information

SCM Apple-Core Style



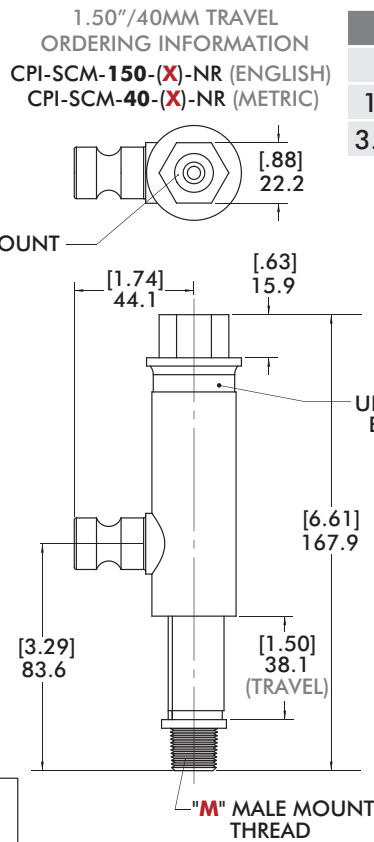
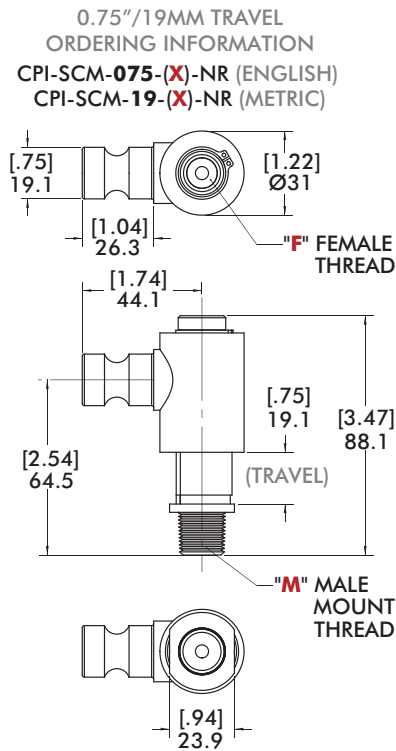
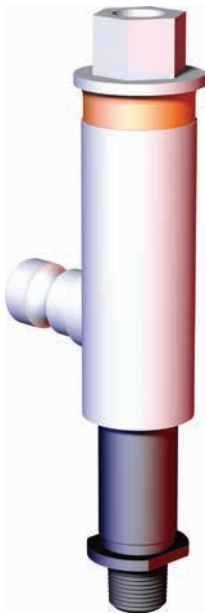
Specifications:

Material: Aluminum used on 1.50"/40mm and 3.00"/75mm travel.

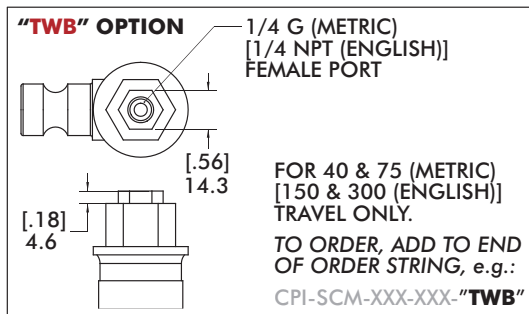
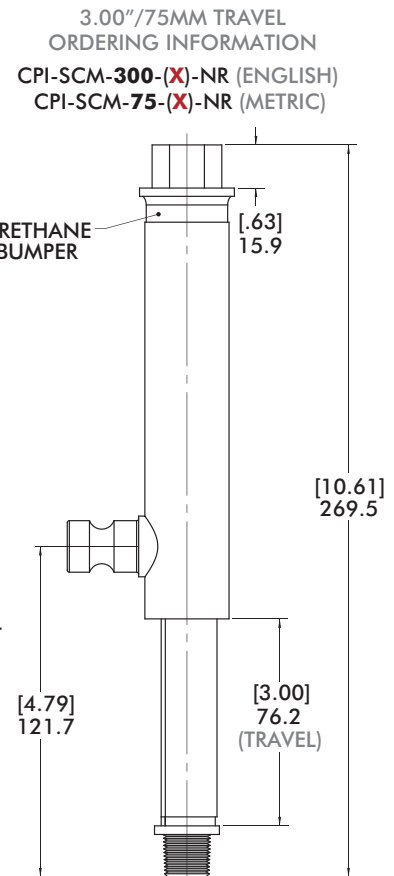
Features:

- Available in three different travel lengths.
- Apple core .75" [19mm] mounting for adjustment along on axis.
- NPT or G mounting threads and vacuum ports.

Note: To be used in vertical orientations only.



Weight	
.75"/19mm Travel	= 142g [5 oz]
1.50"/40mm Travel	= 227g [8 oz]
3.00"/75mm Travel	= 340g [12 oz]



(NR = NON ROTATING)

CPI-SCM-(19/075)-(X)-NR Ports

Version	M	F	(X)
Metric	3/8" G	1/4" G	G14
Imperial	3/8" NPT	1/4" NPT	U14

CPI-SCM-(40/150 & 75/300)-(X)-NR Ports

Version	M	F	(X)
Metric	3/8" G	3/8" G	G14
Imperial	3/8" NPT	3/8" NPT	U14

SPRING-LOADED CUP MOUNTS

Vacuum Products | Features and Options

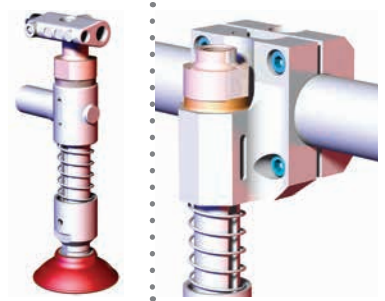
Features:

- Two mounting options.
- Three travel lengths.
- NPT or G mounting threads and vacuum ports.
- Urethane shock absorber.
- Teflon coated shaft.
- Fully modular construction.

Benefits:

- Urethane shock absorber reduces "pick-up" shock.
- Extensive use of polymers reduce weight and cost.
- Extended travel cup mounts can be reconfigured or rebuilt.
- Smooth operation, reduced wear.

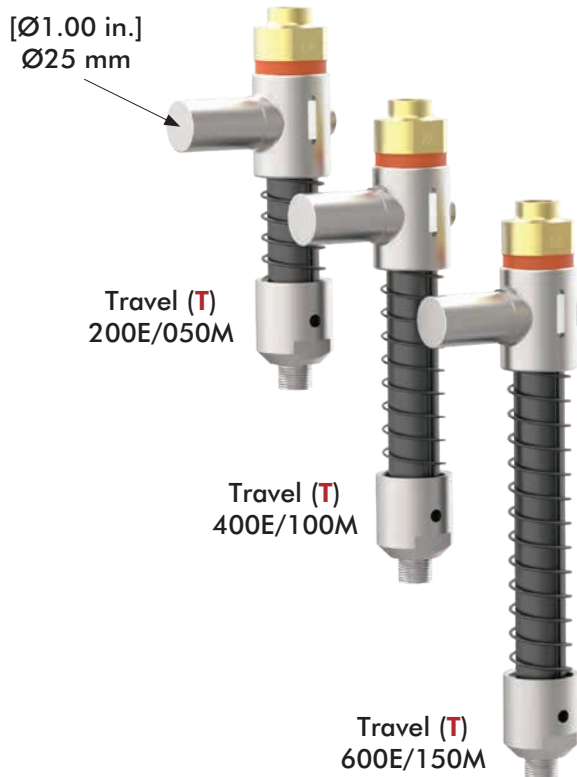
TCL T-Clamp Ø1.00" (in)



Note: To be used in vertical orientations only.

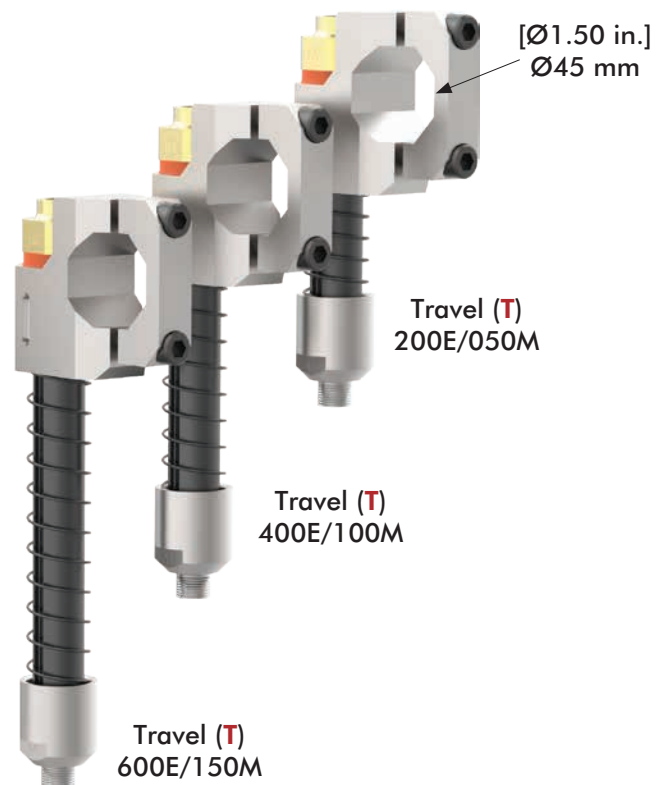
Extension Style Mount

Ø1.00 in. / 25 mm
CPI-SCM10-(T) Imperial
CPI-SCM25-(T) Metric



BodyBuilder Boom Mount

CPI-SCMS-45B-(T)

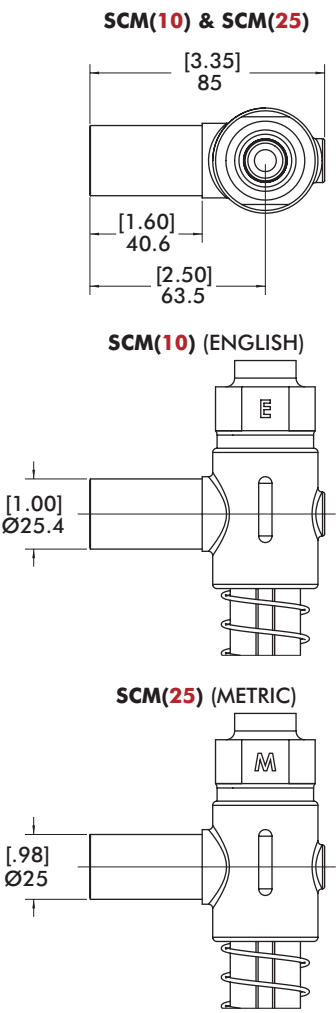


SPRING LOADED VACUUM CUP MOUNTS



Vacuum Products | Extended Travel Dimensions

SCM Bulkhead/Apple Core/Extension Style

Note: To be used in vertical orientations only.



SCM Travel and Length - CPI-SCM(X)-"T"

Version	Travel "T"	L	M	Weight
 Imperial	200E (2.00" Vertical Travel)	187.3 [7.38]	3/8" NPT	.48kg [1.06 lb]
	400E (4.00" Vertical Travel)	238.2 [9.38]	3/8" NPT	.53kg [1.16 lb]
	600E (6.00" Vertical Travel)	288.9 [11.38]	3/8" NPT	.58kg [1.27 lb]
 Metric	050M (50mm Vertical Travel)	187.3 [7.38]	3/8" G	.48kg [1.06 lb]
	100M (100mm Vertical Travel)	238.2 [9.38]	3/8" G	.53kg [1.16 lb]
	150M (150mm Vertical Travel)	288.9 [11.38]	3/8" G	.58kg [1.27 lb]

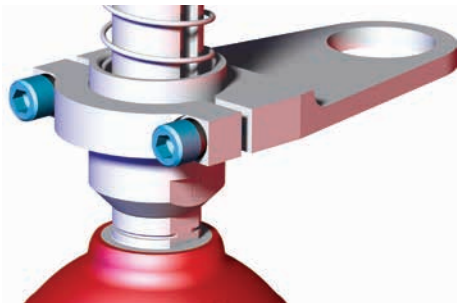
SPRING LOADED VACUUM CUP MOUNT ACCESSORIES

Vacuum Products | Extended Travel Dimensions

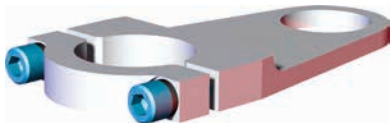
SAP Extended Travel Proximity Switch Mounts

Specifications:
Material: Aluminum

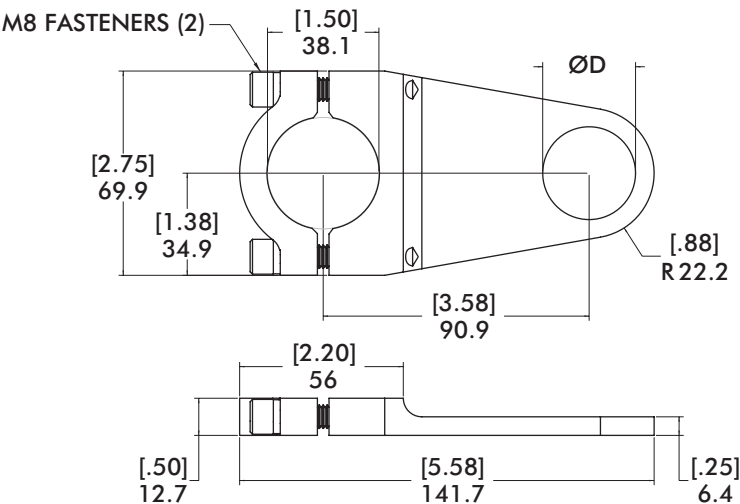
- Features:**
- Mounts 30mm barrel style and square style proximity switches to the extended travel spring-loaded cup mounts.



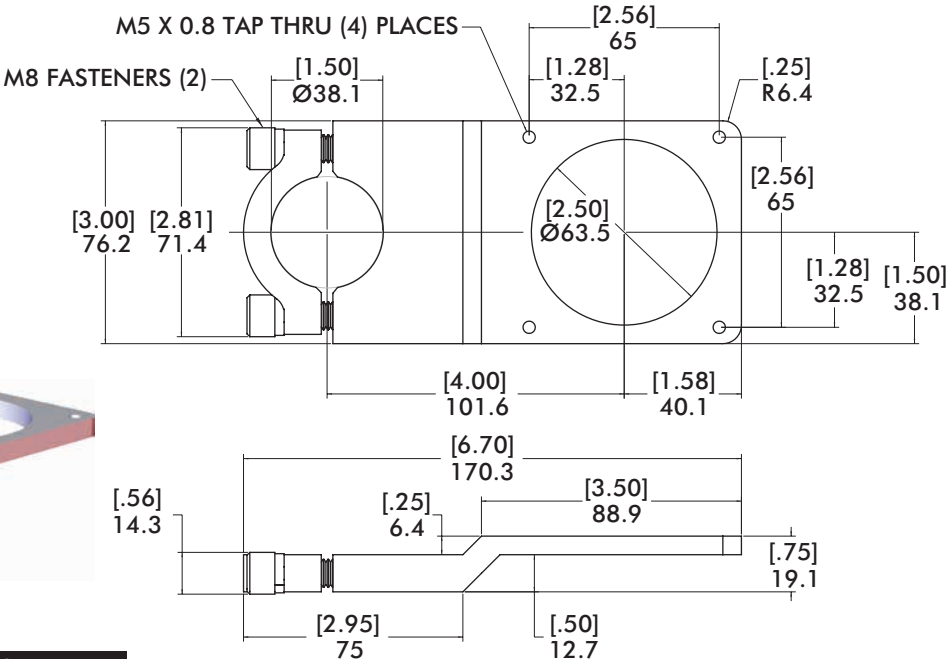
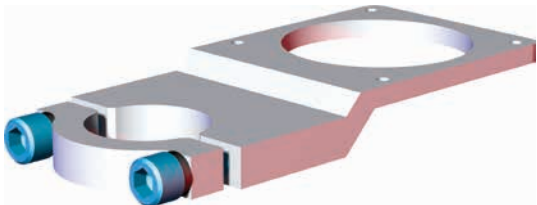
SAP 30mm Barrel Style



Model	ØD	Weight
CPI-SAP-30-PM-150	[1.25] 31.8	.13 kg [.29 lb]
CPI-SAP-18-PM-150	[.75] 19	.17 kg [.38 lb]



SAP 50mm Square Style

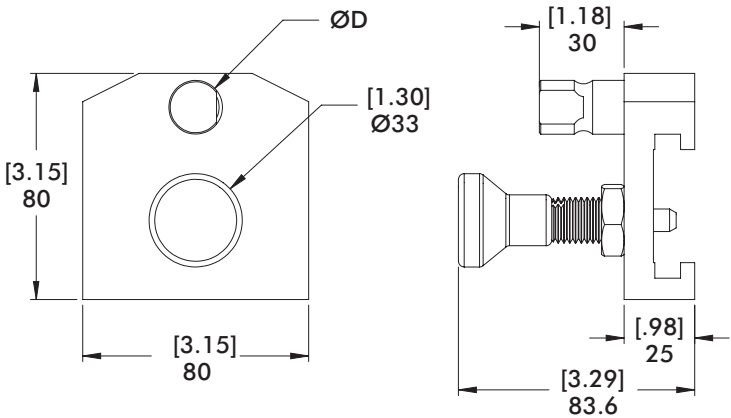
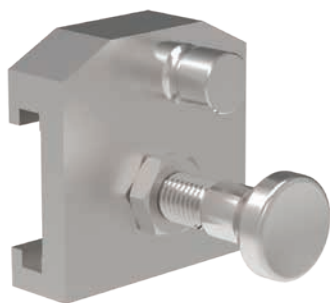


Model	Weight
CPI-SAP-NI50-PM-150	.23 kg [.56 lb]

DOUBLE BLANK DETECTOR QUICK-CHANGE MOUNT

Vacuum Products | Dimensions | Technical Specifications

DBD Quick-Change Mount



Model	ØD	Weight
DBD-19-QC-A	19mm	522g [1.15 lb]
DBD-20-QC-A	20mm	527g [1.16 lb]