



MODEL

16AM-FCC-1

(6 Vanes, CCW Rotation)

16AM-FRV-2

(6 Vanes, Reversible)

16AM-FCW-28

(6 Vanes, CW Rotation)

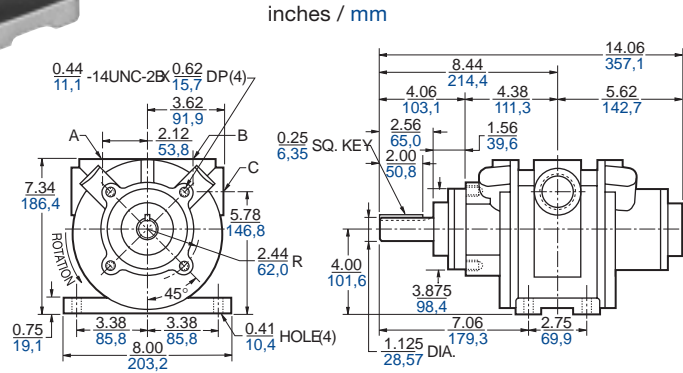
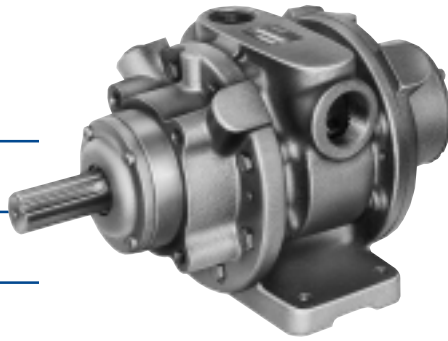
Net wt. 72 lbs. (32,4 kg) and 73 lbs. (32,9 kg) respectively.

FEATURES

- Foot, face mounting
- Any plane operation
- II 2 GD c T4

RECOMMENDED

- Filter AH109F
- Regulator AH110R
- Gauge AA806
- Lubricator AH111L
- Muffler AG601
- Oil AD220 – 1 quart (.94 litres)
- Repair kit K212 (Single Rotation)
- Repair kit K213 (Reversible)



Rotation	A	B	C
Single direction	1 PIPE	NONE	1 1/4 PIPE
Reversible	1 1/4 PIPE	1 1/4 PIPE	NONE

16AM-FRV-13

(6 Vanes, Reversible)

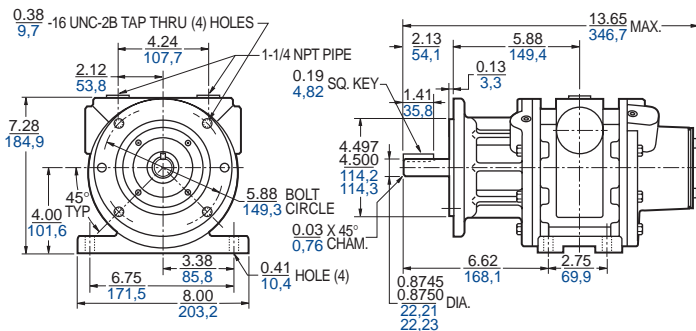
Net wt. 80 lbs. (36,0 kg)

FEATURES

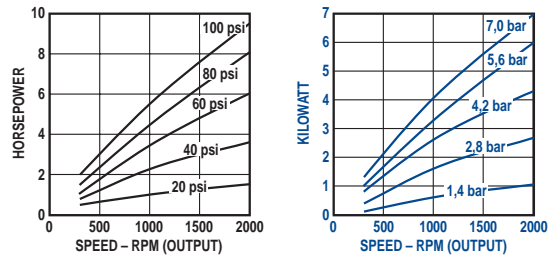
- NEMA 143 & 145TC mounting
- Any plane operation
- II 2 GD c T4

RECOMMENDED

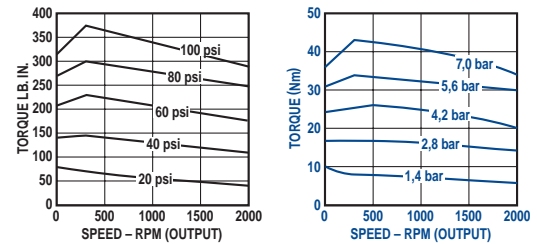
- Filter AH109F
- Regulator AH110R
- Gauge AA806
- Lubricator AH111L
- Muffler AG601
- Oil AD220 – 1 quart (.94 litres)
- Repair kit K213



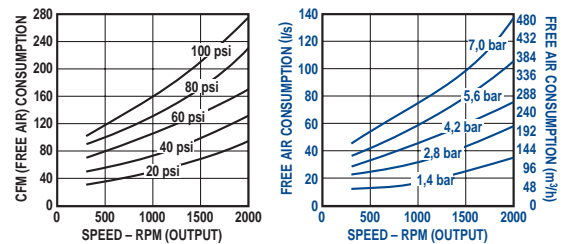
Output Power vs. Speed



Torque vs. Speed



Air Consumption vs. Speed





Air-Powered Gearmotors

16AM Series, 20:1 reduction, 775 – 5200 lbs. in. (90 – 580 Nm) torque at 15 rpm (minimum speed reduction)



MODEL

16AM-13-HB20

(6 Vanes, Reversible)

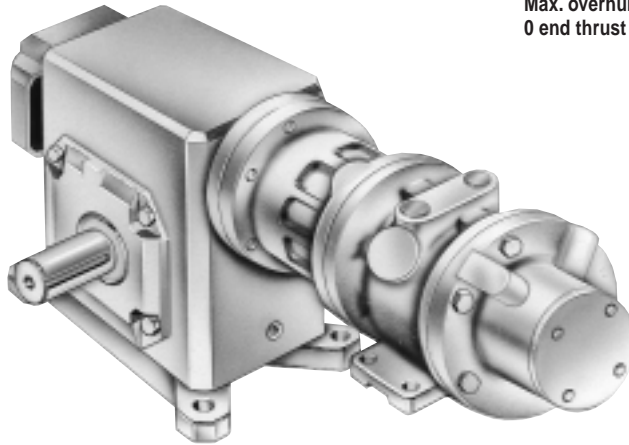
Net wt. for standard configuration
163 lbs. (73,4 kg)

FEATURES

- 20:1 gear reducer
- Base mounting
- Optional mountings and shaft locations available

RECOMMENDED

- Filter AH109F
- Regulator AH110R
- Gauge AA806
- Lubricator AH111L
- Muffler AG601
- Oil AD220 – 1 quart (.94 litres)
- Repair kit K213 (Air motor only)

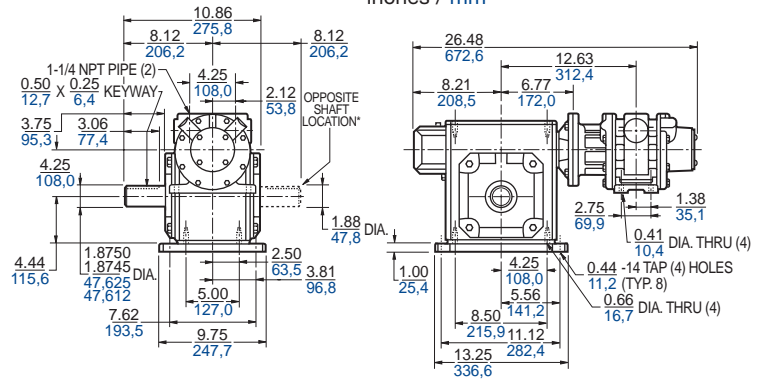


Max. allowable end thrust with 0 overhung load is 3552 lbs. (1598,4 kg) at 30 rpm to 2154 lbs. (969,3 kg) at 100 rpm.
Max. overhung load on output shaft with 0 end thrust 2857 lbs. (1285,7 kg).

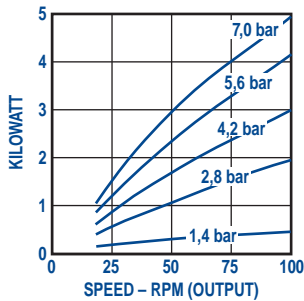
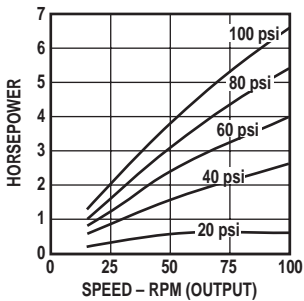
“B” Mounting (photo)

16AM-13-HB20 / *16AM-13-HF20
(standard shaft) / (opposite shaft)

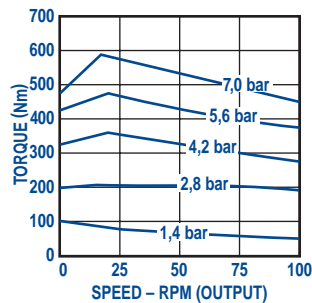
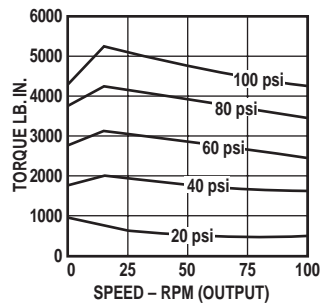
inches / mm



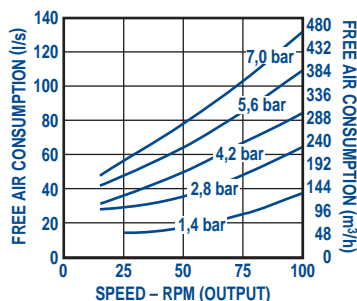
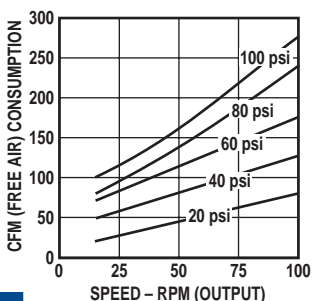
Output Power vs. Speed



Torque vs. Speed



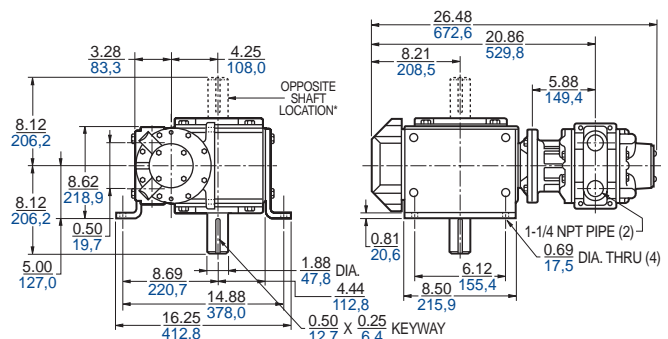
Air Consumption vs. Speed



“C” Mounting

16AM-13-HC20 / *16AM-13-HG20
(standard shaft) / (opposite shaft)

inches / mm

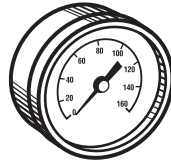




GAUGES

If a gauge is required for your Gast Regulator, please order as a separate item:

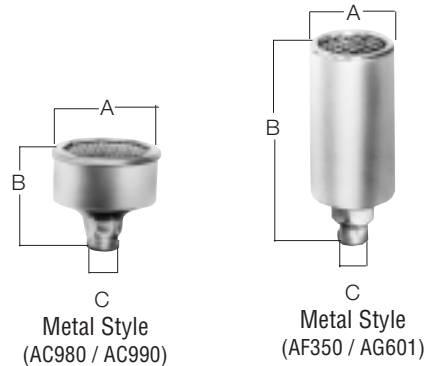
Gast Part No.	Used On	Description
AA806	AH104R AH107R AH110R	1/4" NPS, 0-160 psi



MUFFLERS

Gast Part Number	Used On	Dimensions - in (mm)		
		A	B	C
AF350 (Metal)	1AM/1UP/NL22	1.06 (27)	2.81 (71)	1/8" NPT
AC980 (Metal)	2AM/4AM/NL32/NL42	1.72 (44)	2.31 (59)	1/4" NPT
AC990 (Metal)	6AM/8AM	2.72 (69)	2.94 (75)	1/2" NPT
AG601* (Metal)	16AM	3.12 (79)	21.22 (539)	1 1/4" NPT

* Not included with 16AM series, but is recommended.



FOOT ASSEMBLIES FOR 1AM AND 1UP AIR MOTORS AND GEARMOTORS

FAST AND SIMPLE INSTALLATION

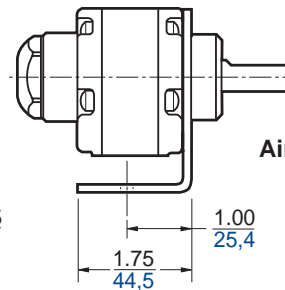
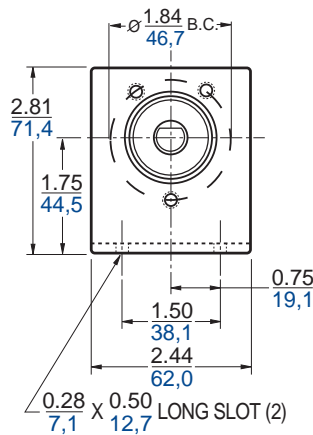
GAST now offers two foot assemblies in kit form:

AG585 for 1AM and 1UP Air Motors, kit includes foot, three mounting screws and instruction sheet.

AG586 for 1AM and 1UP Gearmotors, kit includes foot and three mounting screws.



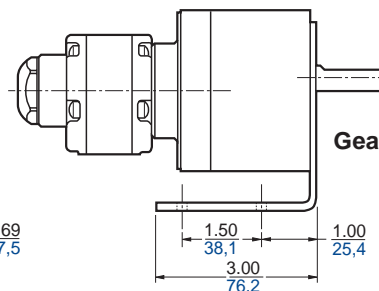
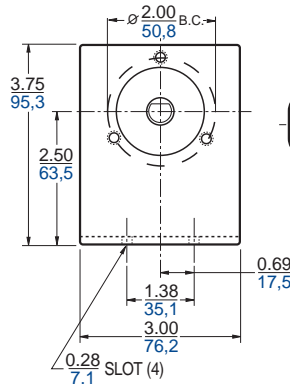
AG585



Air Motor Foot Assembly



AG586



Gearmotor Foot Assembly