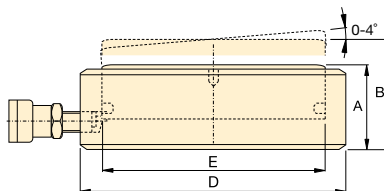


# CUSP-Series, High-Tonnage, Ultra-Flat Cylinders

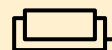
▼ CUSP-Series, Ultra-Flat, High-Tonnage Cylinders, integrated tilting function



- Up to 4% side load of maximum capacity
- Extremely low collapsed height
- Integrated tilting function up to 4 degrees to evenly distribute the load
- Nitrocarburized surface treatment for harsh conditions
- “Red Line” for visual maximum stroke indication



## CUSP Series



Capacity:

**10 - 1000 tons**

Tilted Stroke / Straight Stroke:

**0.24-0.39"/0.26-0.69"**

Integrated:

**Tilting Function**

Maximum Operating Pressure:

**10,150 psi**



**IMPORTANT!**

**CUSP Cylinders DO NOT have a stop-ring for stroke limitation!**



**IMPORTANT!**

**All Ultra-Flat Cylinders require a solid lifting surface for correct support. The use of these flat cylinders on surfaces such as sand, mud or dirt, may result in cylinder damage.**

Page: 400

Cylinder Capacity @ 10,150 psi ton (max.)	Tilted Stroke (in)	Straight Stroke (in)	Model Number	Tilting +/- (degrees)	Cylinder Effective Area (in <sup>2</sup> )	Oil Capacity (in <sup>3</sup> )	Collapsed Height A (in)	Extended Height B (in)	Outside Diameter D (in)	Cylinder Bore Diameter E (in)	Wt. (lbs)
10 (10.9)	0.24	0.26	CUSP10 <sup>1)</sup>	2	2.15	0.57	1.40	1.66	2.83	1.65	2.6
20 (22.2)	0.24	0.28	CUSP20 <sup>1)</sup>	2	4.39	1.21	1.59	1.87	3.54	2.36	4.2
30 (34.8)	0.24	0.29	CUSP30 <sup>1)</sup>	2	6.85	1.97	1.67	1.96	4.13	2.95	6.0
50 (61.8)	0.39	0.52	CUSP50 <sup>1)</sup>	4	12.17	6.37	2.24	2.77	5.12	3.94	12.3
75 (89.0)	0.39	0.55	CUSP75 <sup>1)</sup>	4	17.53	9.66	2.38	2.93	5.91	4.72	17.6
100 (121.1)	0.39	0.58	CUSP100 <sup>2)</sup>	4	23.85	13.81	2.50	3.08	6.69	5.51	23.8
150 (178.6)	0.39	0.56	CUSP150 <sup>2)</sup>	3	35.19	19.81	2.56	3.12	7.87	6.69	33.7
200 (235.0)	0.39	0.59	CUSP200 <sup>2)</sup>	3	46.28	27.15	2.72	3.30	9.02	7.68	47.4
250 (285.6)	0.39	0.61	CUSP250 <sup>2)</sup>	3	56.28	34.34	2.85	3.46	9.92	8.46	60.2
300 (355.9)	0.39	0.56	CUSP300 <sup>2)</sup>	2	70.12	38.93	2.85	3.41	11.10	9.45	75.8
400 (450.5)	0.39	0.57	CUSP400 <sup>2)</sup>	2	88.75	51.01	3.05	3.63	12.44	10.63	101.9
500 (574.8)	0.39	0.60	CUSP500 <sup>2)</sup>	2	113.24	67.77	3.25	3.85	14.02	12.01	138.2
600 (672.9)	0.39	0.61	CUSP600 <sup>2)</sup>	2	132.57	81.42	3.44	4.06	15.20	12.99	172.8
750 (846.0)	0.39	0.64	CUSP750 <sup>2)</sup>	2	166.66	106.95	3.68	4.32	17.01	14.57	231.9
1000(1142.6)	0.39	0.69	CUSP1000 <sup>2)</sup>	2	225.09	154.20	4.06	4.74	19.76	16.93	346.1

<sup>1)</sup> Coupler AR630 including dustcap: Use HB7206 hose including AH630 coupler to connect to your pump.

<sup>2)</sup> Coupler CR400 including dustcap: Use HC-Series hose including CH604 coupler to connect to your pump.