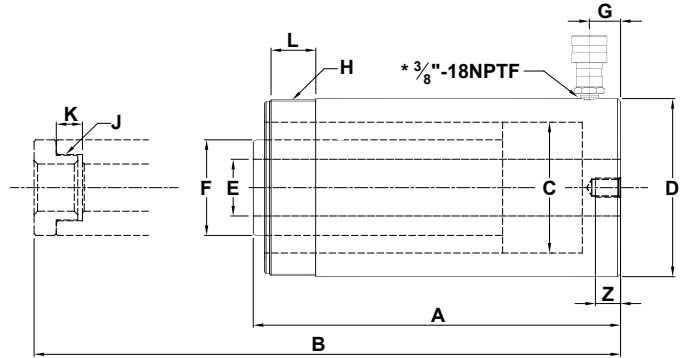
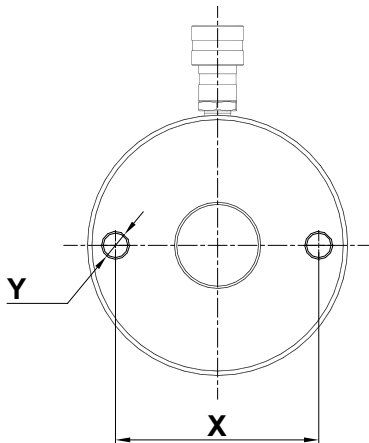


# HOLLOW HOLE CYLINDERS

- Minimum leak risk
- Ideal for pulling and pushing applications
- Heavy duty compression spring
- Dual wipers help prevent contamination
- Collar thread protector
- High flow coupler with dust cap
- XT cylinders do not come with internal plunger threads



Cylinder Capacity (tons)	Stroke (in)	Model Number	Cylinder Effective Area (in <sup>2</sup> )	Internal Pressure at Capacity (psi)	Oil Cap. (in <sup>3</sup> )	Min. Height A (in)	Max. Height B (in)	O.D. D (in)	Plunger			
									I.D. E (in)	O.D. F (in)	Internal Thread J (in)	Internal Thread Length K (in)
12	0.31	HC1201T	2.91	8,236	0.89	2.36	2.67	2.76	0.77	1.38	3/4"-16UN	0.63
	1.61	HC1202T			4.70	4.74	6.36					
	1.61	HC1202XT			4.70	4.74	6.36					
	2.99	HC1203XT			8.72	7.24	10.24					
20	2.01	HC2002T	4.90	8,167	9.83	6.38	8.39	3.92	1.06	2.15	1-9/16"-16UN	0.75
	6.06	HC2006T			29.70	12.05	18.11					
30	2.52	HC3002T	6.32	9,488	15.93	7.05	9.57	4.50	1.31	2.48	1-13/16"-16UN	0.87
	6.11	HC3006T			38.67	13.02	19.13					
60	3.00	HC6003T	13.05	9,195	39.10	9.77	12.77	6.25	2.13	3.66	2 3/4"-16UN	0.75
	6.00	HC6006T			78.25	12.76	18.76					
100	3.00	HC10003T	22.13	9,036	66.31	10.00	13.00	8.39	3.11	4.92	4"-16UN	0.98



Model Number	Collar Thread		Base to Inlet Port G (in)	Base Mounting Hole			Weight (lbs)
	Dia. H (in)	Lgth. L (in)		Bolt Circle X (in)	Thread Y (in)	Thread Depth Z (in)	
HC1201T	2 3/4"-16	1.81	0.57	2.00	5/16"-18UNC	0.35	3.3
HC1202T			0.59				6.2
HC1202XT			0.59				6.2
HC1203XT			0.75				8.6
HC2002T	3 7/8"-12	1.50	0.75	3.25	3/8"-16UNC	0.37	15.9
HC2006T			29.5				
HC3002T	4 1/2"-12	1.66	0.91	3.62	3/8"-16UNC	0.55	22.9
HC3006T			43.0				
HC6003T	6 1/4"-12	1.91	1.06	5.12	1/2"-13UNC	0.55	65.7
HC6006T			81.1				
HC10003T	8 3/8"-12	2.38	1.06	7.01	5/8"-11UNC	0.75	113.3