

# HYDRAULIC PRESSURE GAUGE

Gauge Type	Model Number	Face Diameter (in)	Thread (in)	Pressure Range		Graduation			
				(psi)	(bar)	Major Graduation (psi)	Minor Graduation (psi)	Major Graduation (bar)	Minor Graduation (bar)
Dry	GD2514	2.50	1/4"-18NPTF	0-10,000	0-700	1,000	200	100	10
	GD4014	4.00				2,000	100		
Wet	GW2514	2.50				1,000	200		
	GW4014	4.00				2,000	100		

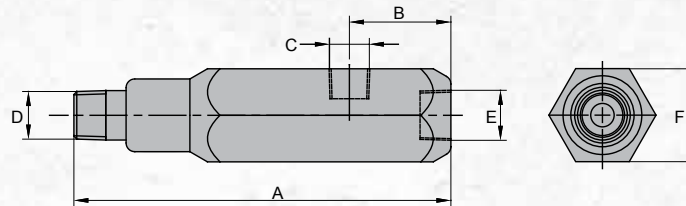


## PRESSURE & WEIGHT GAUGES

- Gauge indicates hydraulic pressure and weight
- Pressure and weight gauges can be ordered for all BVA cylinders
- Call if the cylinder is not listed

Model Number	Gauge Type	Face Diameter (in)	Use with Cylinders	Thread
GW2514-0100LB	WET	2.50	H0501 THROUGH H0509	1/4" - 18NPTF
GW2514-0224LB	WET	2.50	H1001 THROUGH H1014, HD1010, HD1012	1/4" - 18NPTF
GW2514-0314LB	WET	2.50	H1501 THROUGH H1514	1/4" - 18NPTF
GW2514-0515LB	WET	2.50	H2501 THROUGH H2514	1/4" - 18NPTF

## GAUGE ADAPTER



Model Number	Dimensions (in)					
	A	B	C	D	E	F
CF3814	5.12	1.38	1/4"-18NPTF	3/8"-18NPTF	3/8"-18NPTF	1.25

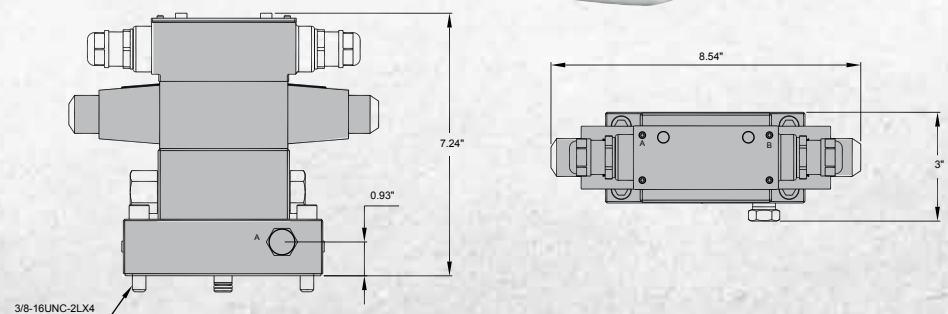
## HYDRAULIC OIL

- Recommended for all
- BVA cylinders and pumps

Volume (gal)	Model Number	Viscosity Index (min)	Viscosity @ 100°F (S.U.S.)	Viscosity @ 210°F (S.U.S.)	ASTM Grade	Flash Point (°F)	Pour Point (°F)	API Gravity
1	F01	144	234	53	215	356	-49	30.8



## SOLENOID VALVE



Use With Cylinder	Model Number	Valve Type	Valve Function	Hydraulic Symbol	Schematic Flow path			Weight (lbs)
Single Acting	PS33L	Solenoid 115VAC	Advance/ Hold/ Return					7.0
Double Acting	PS43L	Solenoid 115VAC	Advance/ Hold/ Return					7.0