

BODYBUILDER™ TRANSITION BRACKETS AND BLOCKS



BodyBuilder™ Octagonal Tooling | Explaining the Patented Alignment System

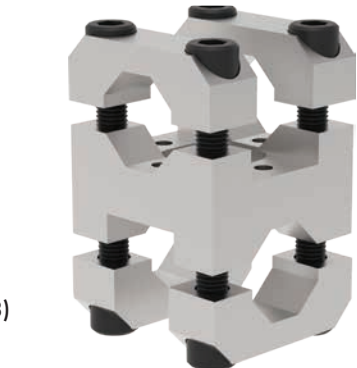
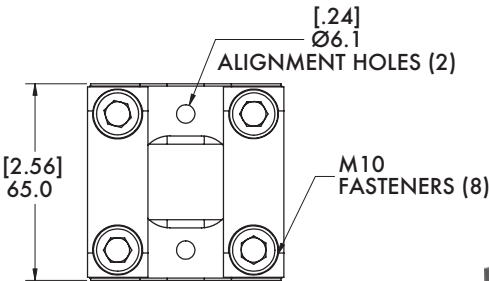
30B-30B 30mm to 30mm Transition Bracket Assembly

Features:

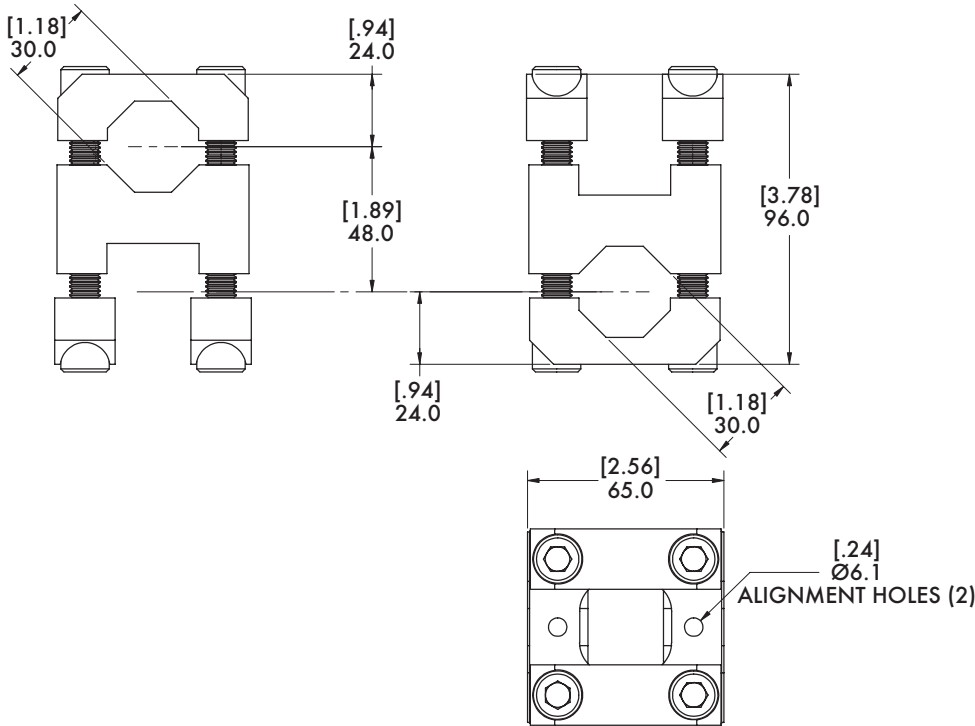
- Connects (2) 30mm extrusions perpendicular to each other.
- Lightweight, high-strength aluminum design.

Specifications:

Max.Static Clamp Load:
30mm: 271 Nm [200 ft-lb]
Material: Aluminum



ALIGNMENT NUTS INCLUDED



Model Number
M-30B-30B-M

Weight
.82 kg [1.80 lb]

30B-45B 30mm to 45mm Transition Bracket Assembly



Specifications:

Max. Static Clamp Load:

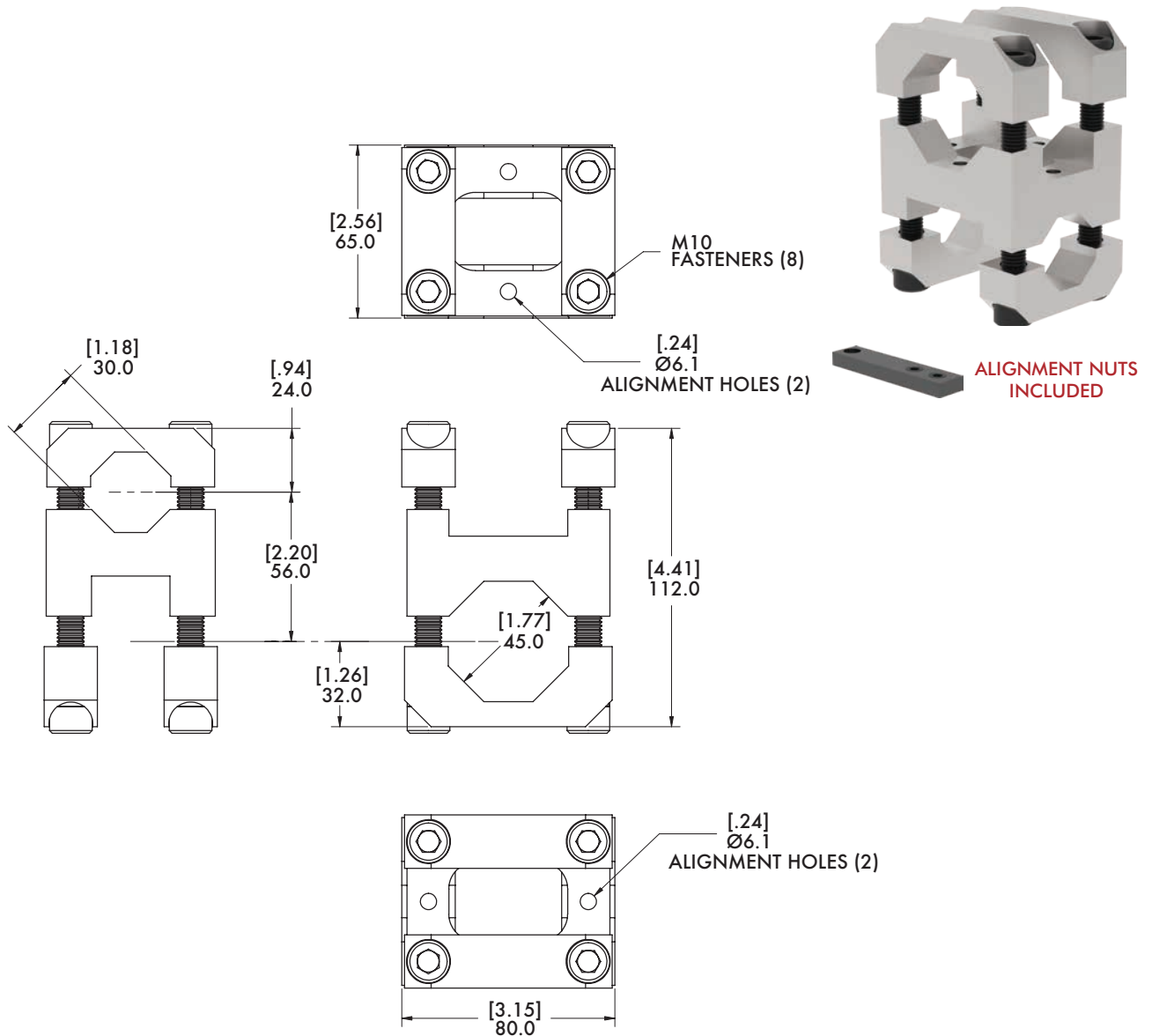
45mm: 475 Nm [350 ft-lb]

30mm: 271 Nm [200 ft-lb]

Material: Aluminum

Features:

- Connects 30mm and 45mm extrusions perpendicular to each other.
- Lightweight, high-strength aluminum design.



Model Number

M-30B-45B-M

Weight

1.00 kg [2.20 lb]

BODYBUILDER™ TRANSITION BRACKETS AND BLOCKS

BodyBuilder™ Octagonal Tooling | Dimensions | Technical Specifications



45B-45B 45mm to 45mm Transition Bracket Assembly

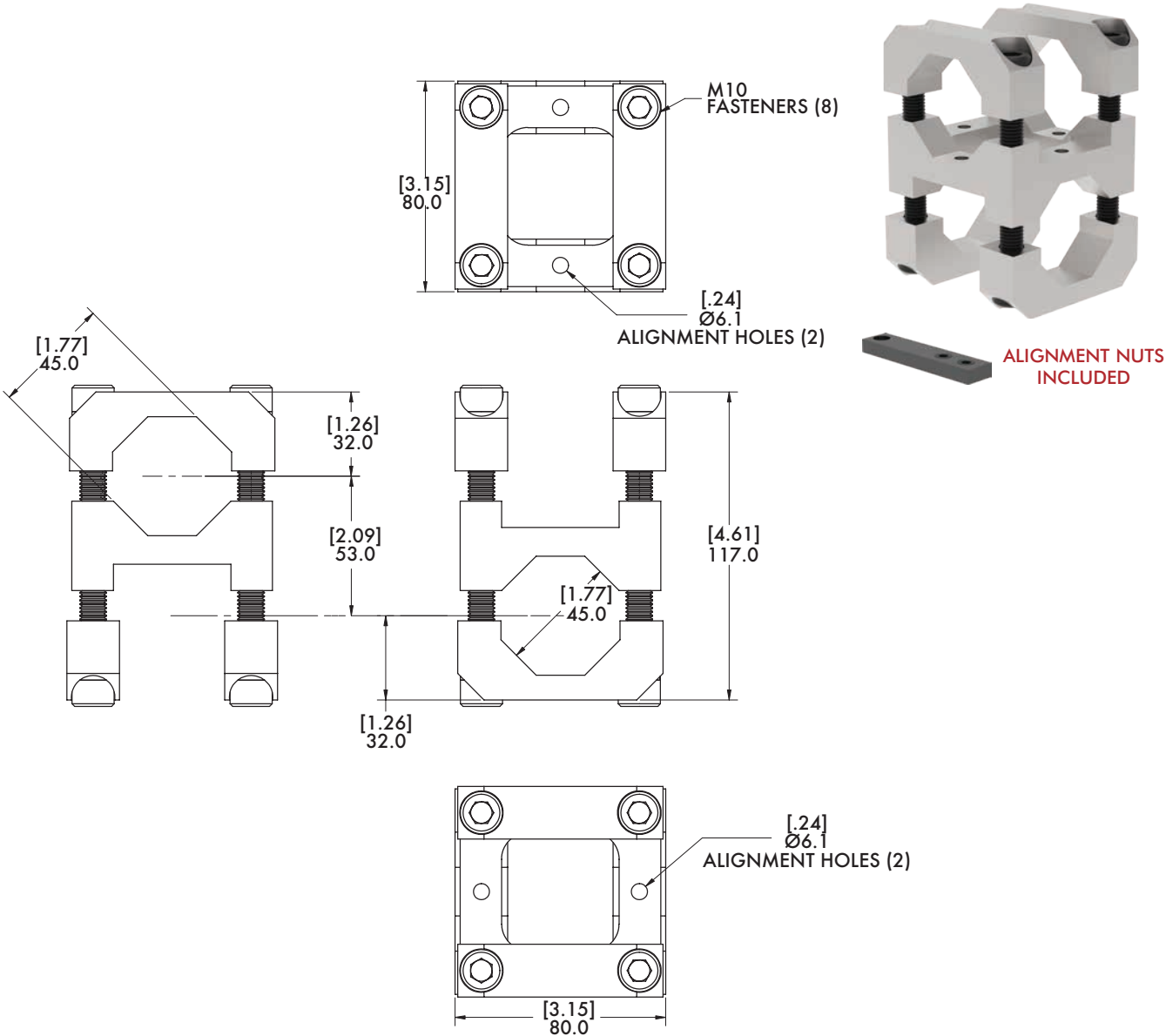
Features:

- Connects (2) 45mm extrusions perpendicular to each other.
- Lightweight, high-strength aluminum design

Specifications:

Max. Static Clamp Load:
45mm: 475 Nm [350 ft-lb]

Material: Aluminum



Model Number	Weight
M-45B-45B-M	1.05 kg [2.31 lb]

30B-60B 30mm to 60mm Transition Bracket Assembly



Specifications:

Max. Static Clamp Load:

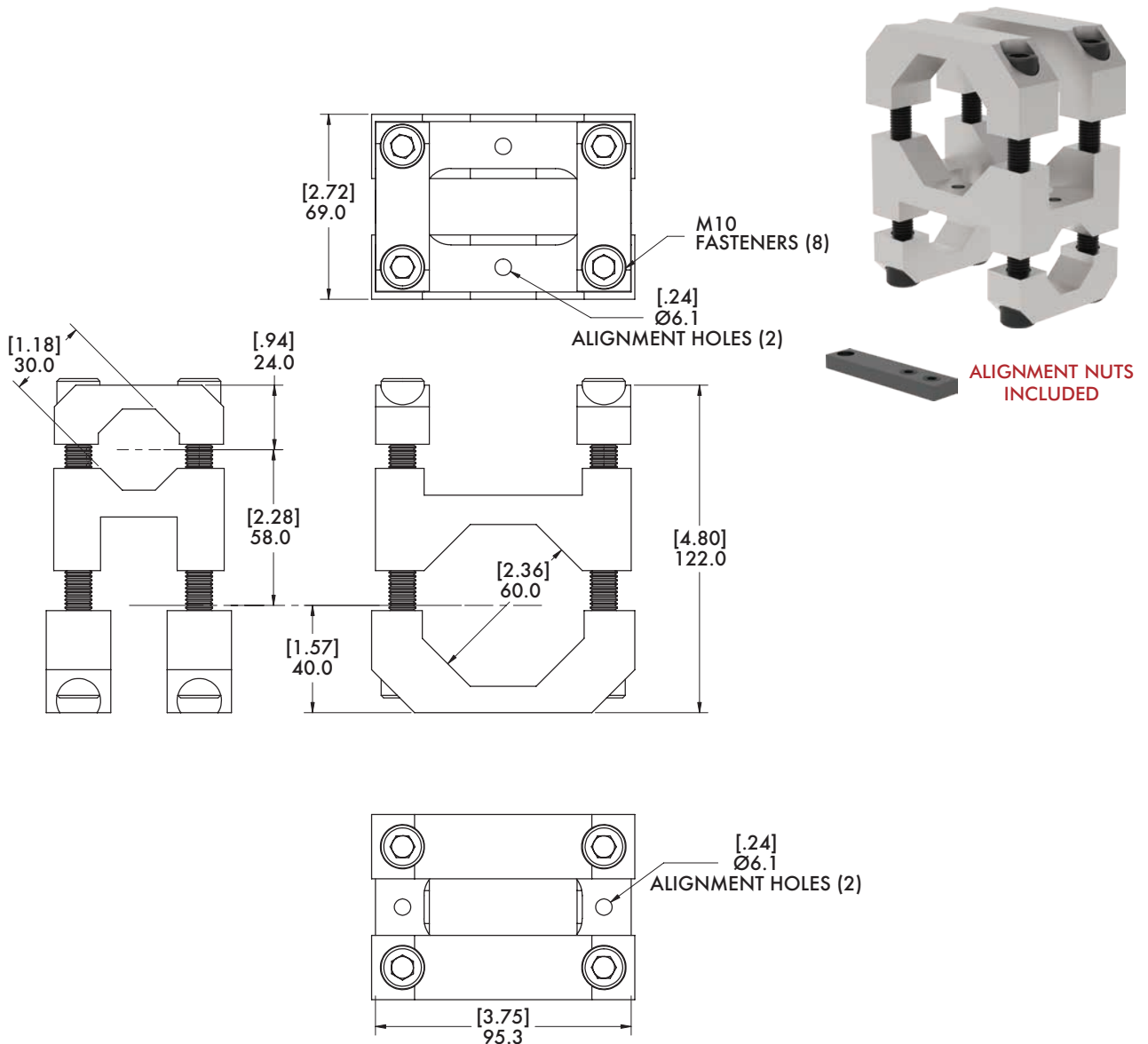
60mm: 746 Nm [550 ft-lb]

30mm: 271 Nm [200 ft-lb]

Material: Aluminum

Features:

- Connects 30mm and 60mm extrusions perpendicular to each other.
- Lightweight, high-strength aluminum design.



Model Number

M-30B-60B-M

Weight

1.13 kg [2.50 lb]

BODYBUILDER™ TRANSITION BRACKETS AND BLOCKS

BodyBuilder™ Octagonal Tooling | Dimensions | Technical Specifications



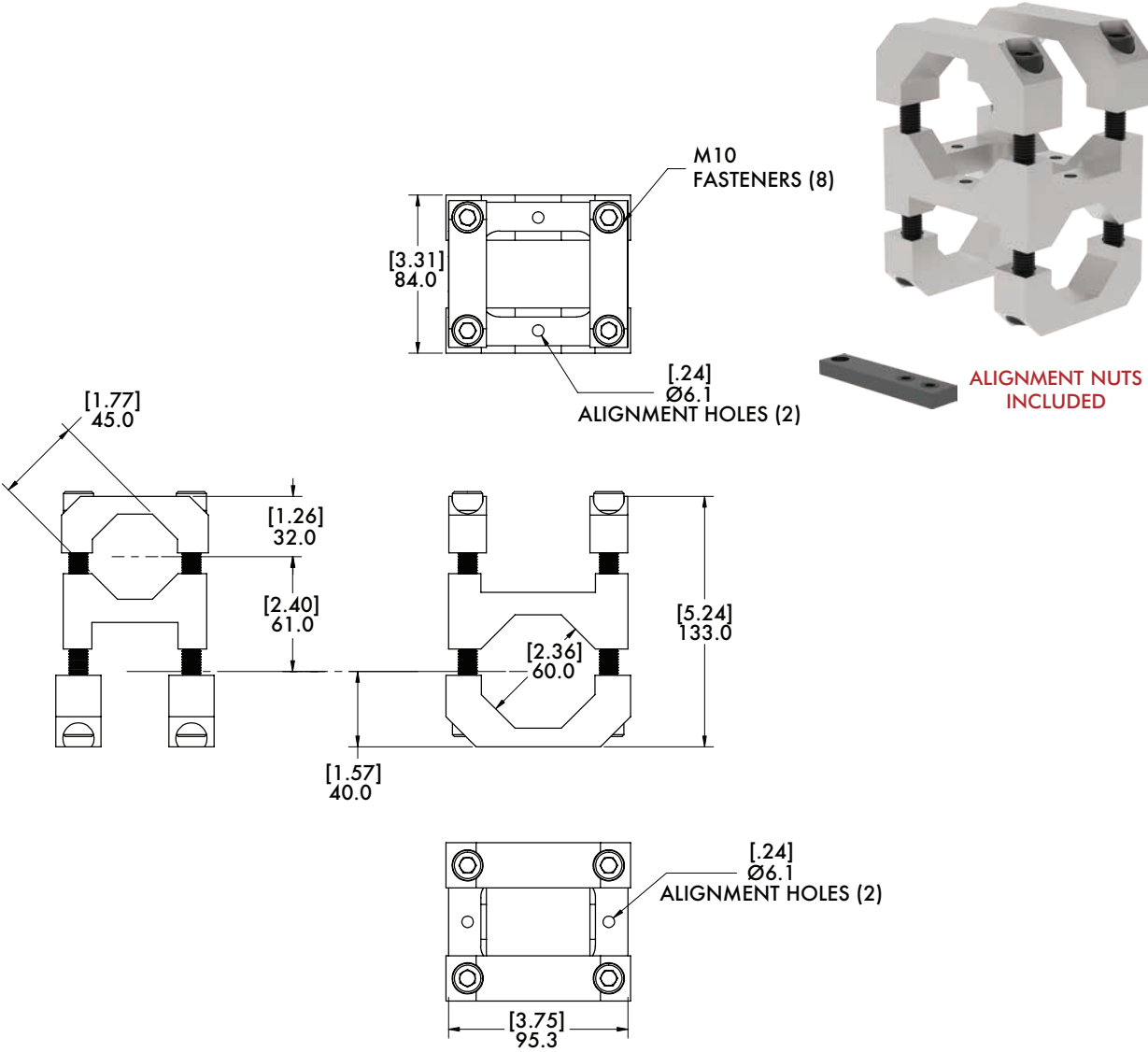
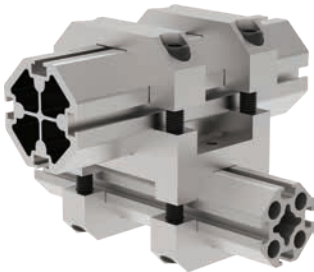
45B-60B 45mm to 60mm Transition Bracket Assembly

Features:

- Connects 45mm and 60mm extrusions perpendicular to each other.
- Lightweight, high-strength aluminum design.

Specifications:

Max. Static Clamp Load:
60mm: 746 Nm [550 ft-lb]
45mm: 475 Nm [350 ft-lb]
Material: Aluminum



Model Number

M-45B-60B-M

Weight

1.23 kg [2.70 lb]

60B-60B 60mm to 60mm Transition Bracket Assembly



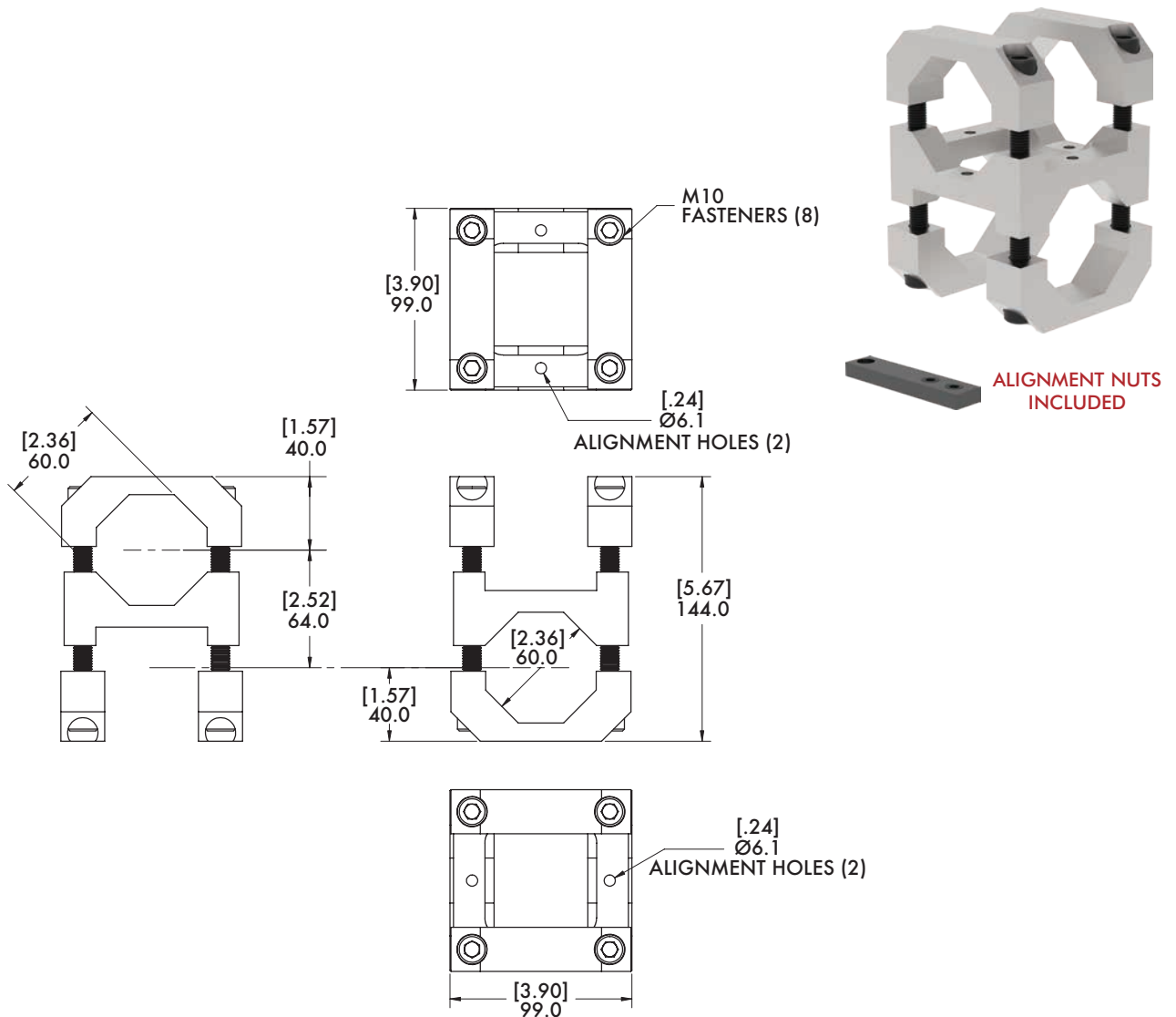
Specifications:

Max. Static Clamp Load:
60mm: 746 Nm [550 ft-lb]

Material: Aluminum

Features:

- Connects (2) 60mm extrusions perpendicular to each other.
- Lightweight, high-strength aluminum design



Model Number

M-60B-60B-M

Weight

1.36 kg [3.00 lb]



**Body
Builder**™

30B-90B 30mm to 90mm Transition Bracket Assembly

Features:

- Connects 30 and 90mm extrusions perpendicular to each other.
- Lightweight, high-strength aluminum design.

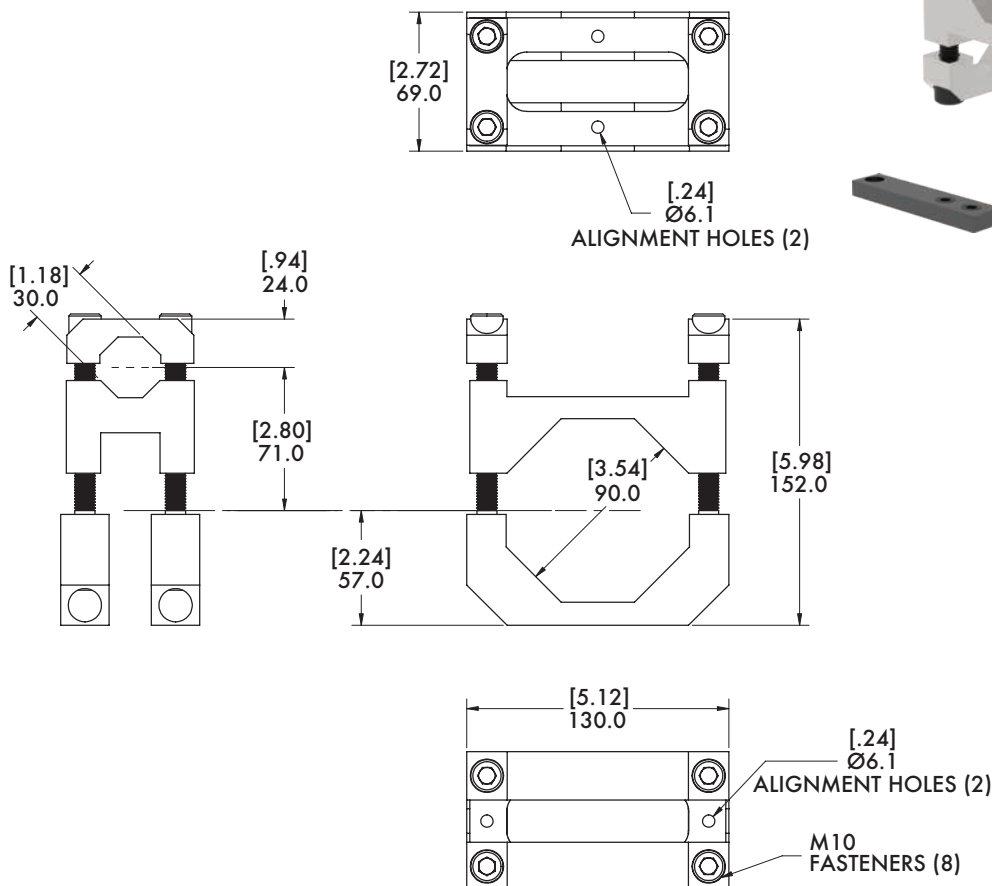
Specifications:

Max. Static Clamp Load:

30mm: 271 Nm [200 ft-lb]

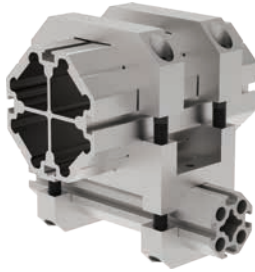
90mm: 746 Nm [550 ft-lb]

Material: Aluminum



Model Number	Weight
M-30B-90B-M	1.78 kg [3.93 lb]

45B-90B 45mm to 90mm Transition Bracket Assembly



Specifications:

Max. Static Clamp Load:

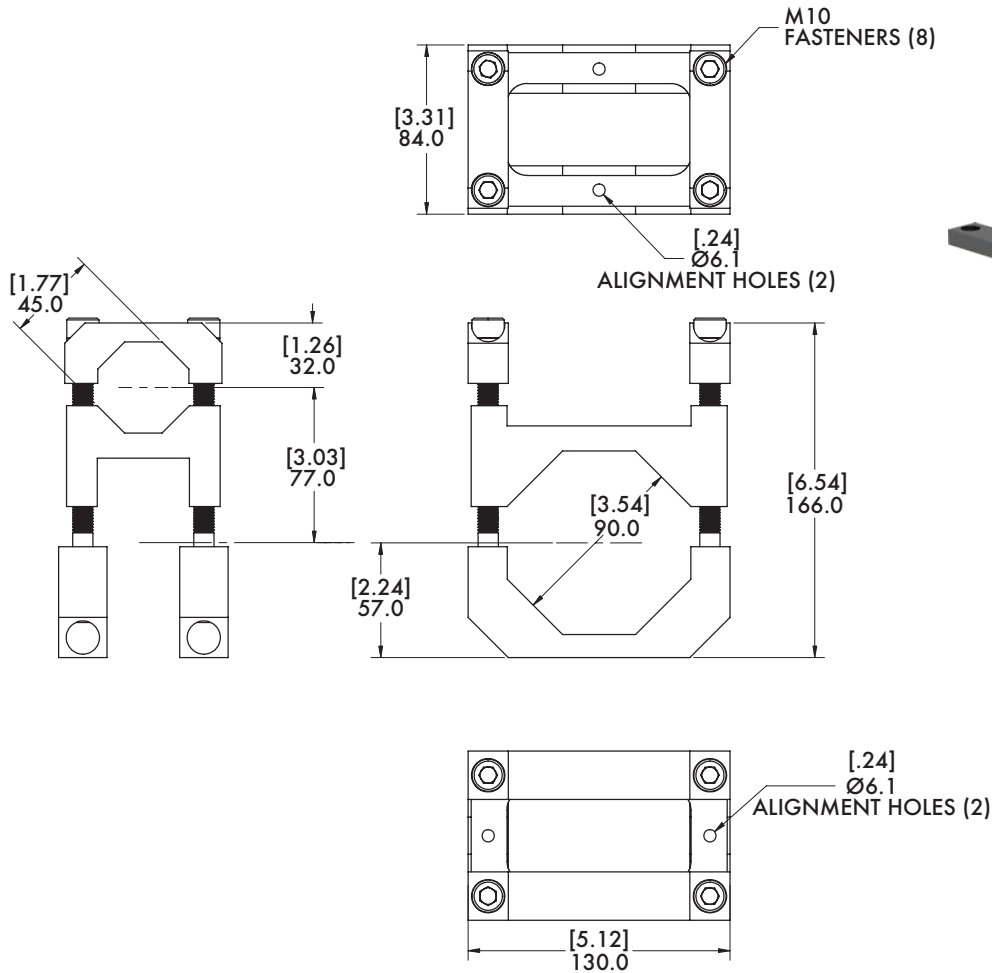
45mm: 475 Nm [350 ft-lb]

90mm: 746 Nm [550 ft-lb]

Material: Aluminum

Features:

- Connects 45 and 90mm extrusions perpendicular to each other.
- Lightweight, high-strength aluminum design.



Model Number

M-45B-90B-M

Weight

1.91 kg [4.21 lb]

BODYBUILDER™ TRANSITION BRACKETS AND BLOCKS

BodyBuilder™ Octagonal Tooling | Dimensions | Technical Specifications



60B-90B 60mm to 90mm Transition Bracket Assembly

Features:

- Connects 60mm and 90mm extrusions perpendicular to each other.
- Lightweight, high-strength aluminum design.

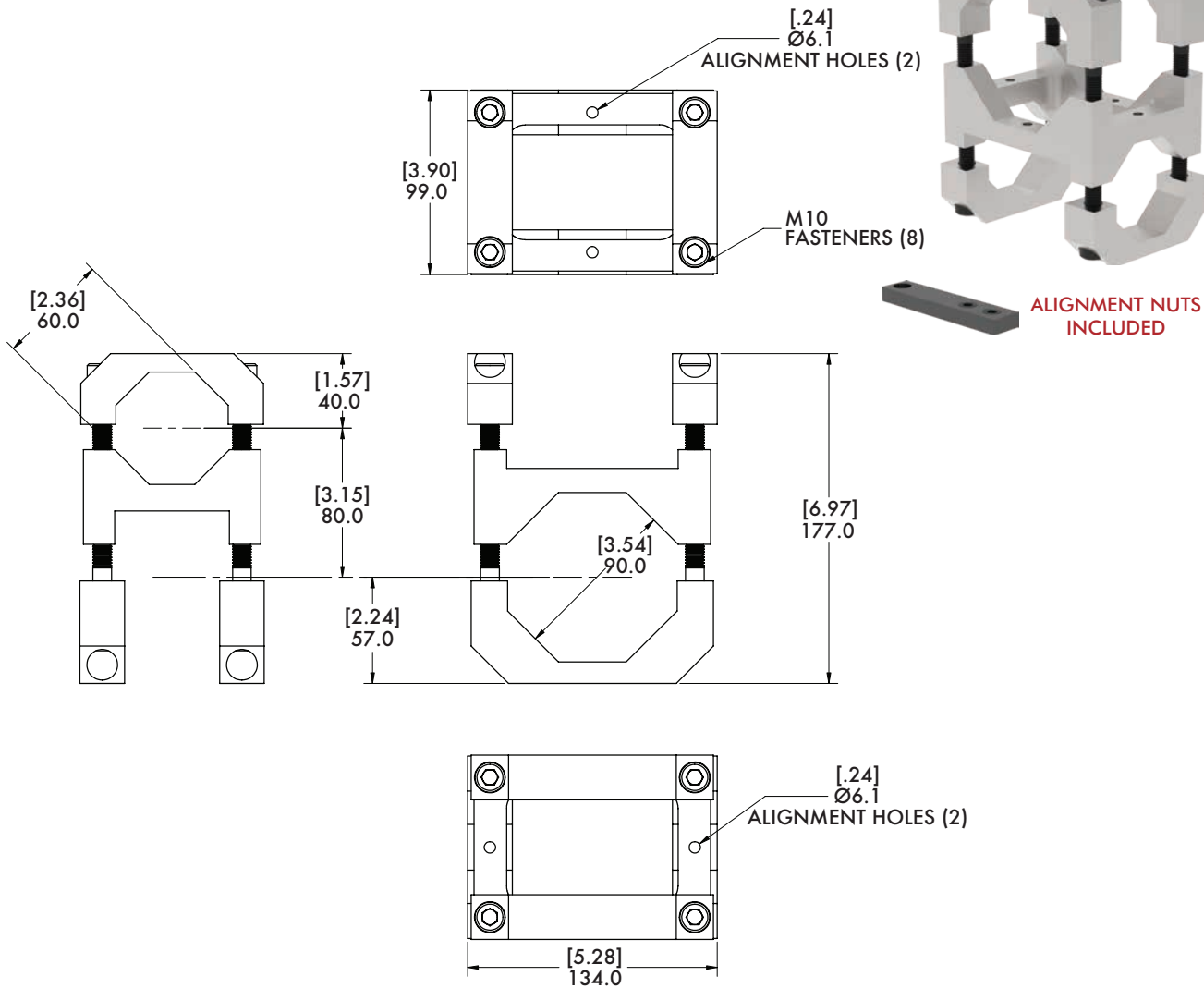
Specifications:

Maximum Clamp Load:

60mm and 90mm:

746 Nm [550 ft-lb]

Material: Aluminum



Model Number

M-60B-90B-M

Weight

2.25 kg [4.97 lb]

90B-90B 90mm to 90mm Transition Bracket Assembly

Specifications:

Max. Static Clamp Load:
746 Nm [550 ft-lb]

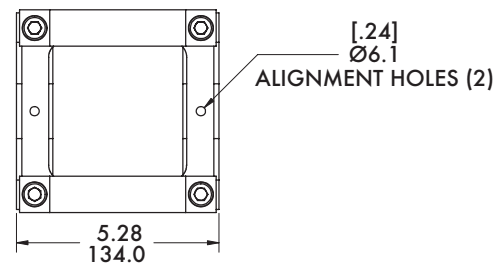
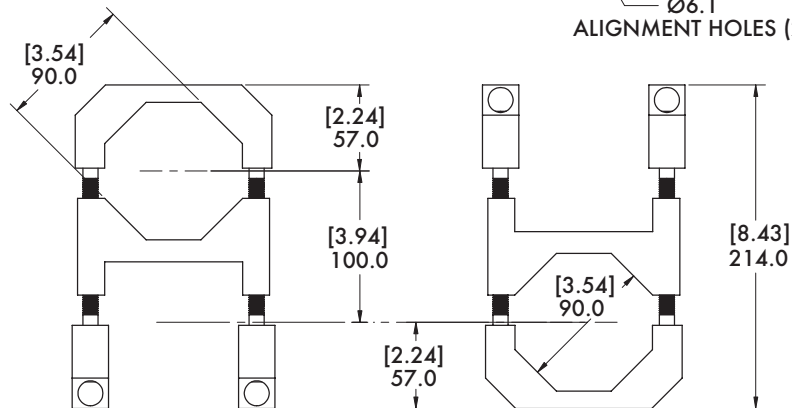
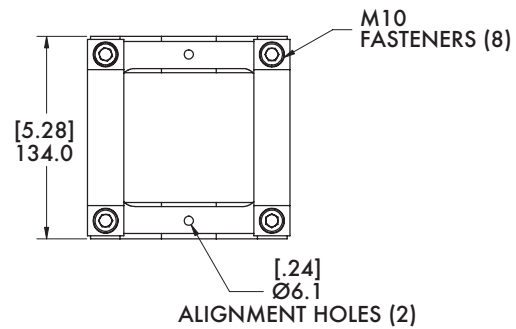
Material: Aluminum

Features:

- Connects (2) 90mm extrusions perpendicular to each other.
- Lightweight, high-strength aluminum design.



ALIGNMENT NUTS
INCLUDED



Model Number

M-90B-90B-M

Weight

3.33 kg [7.34 lb]

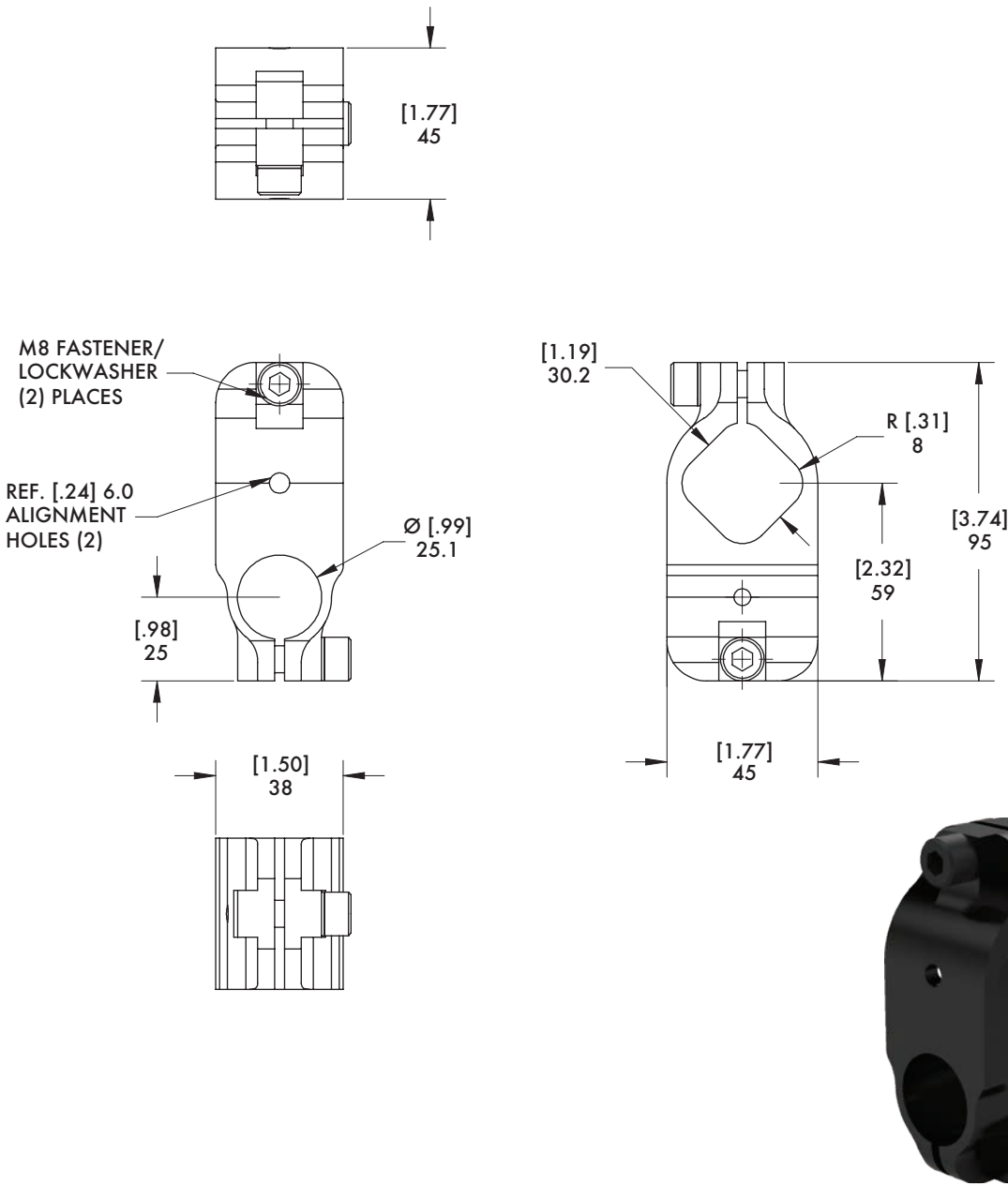
BODYBUILDER™ SQUARE CLAMPS

BodyBuilder™ Octagonal Tooling | Dimensions | Technical Specifications



30B-25M 30mm Octagon to 25mm Round

Specifications:
Max. Static Clamp Load:
407 Nm [300 ft-lb]
Material: High Strength Aluminum



Model Number
M-30B-25M-M

Weight
203g [0.45lbs]

BODYBUILDER™ SQUARE CLAMPS

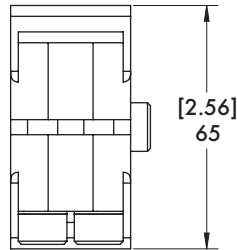
45B-25M (-10E) 45mm Octagon to 25mm or 1 in. Round

Specifications:

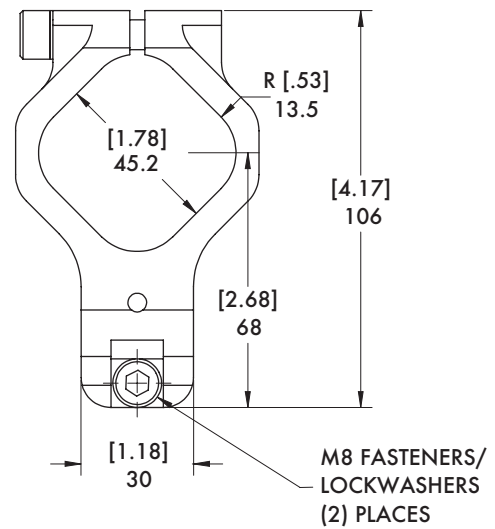
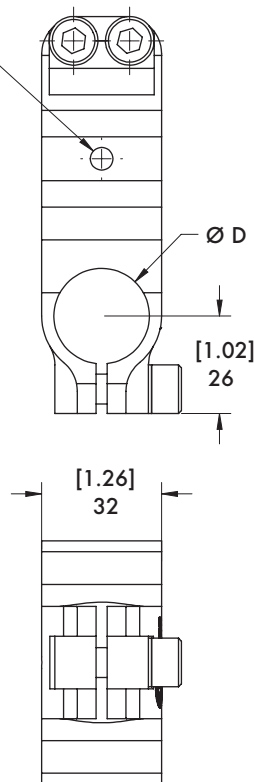
Max. Static Clamp Load:

407 Nm [300 ft-lb]

Material: High Strength Aluminum



REF. [.24] 6.0
ALIGNMENT
HOLES (2)



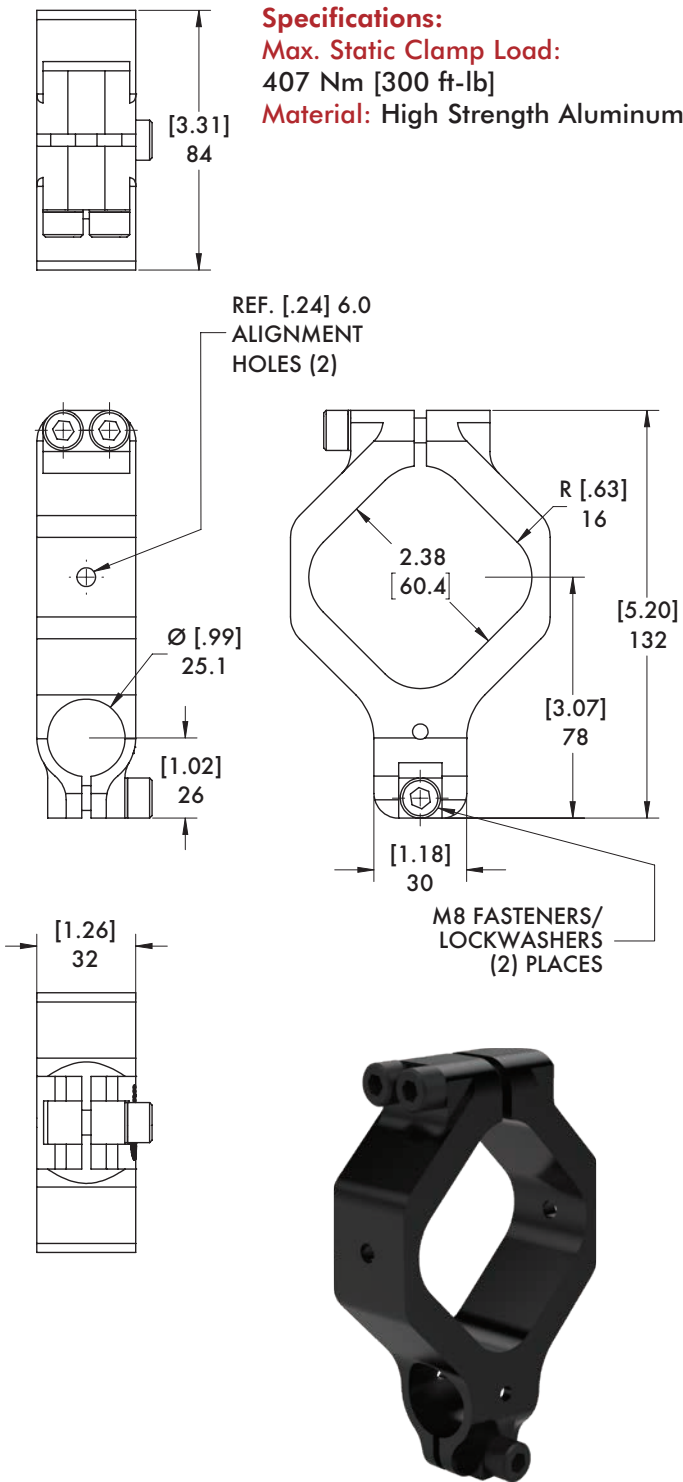
Model Number	Weight	ØD
M-45B-25M-M	239g [0.53lbs]	25mm
M-45B-10E-M	237g [0.52lbs]	1 in.

BODYBUILDER™ SQUARE CLAMPS

BodyBuilder™ Octagonal Tooling | Octagon to Round Transition Block Assembly

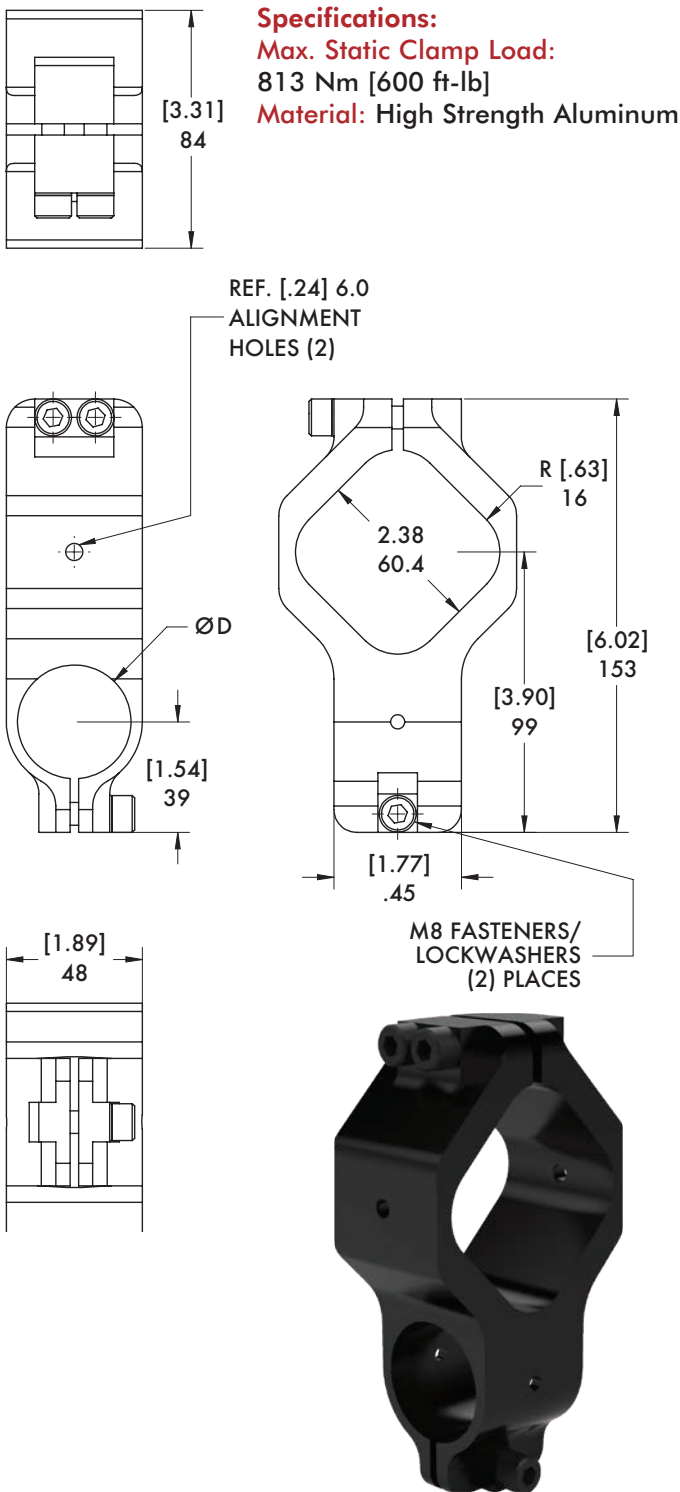


60B-25M 60mm Octagon to 25mm Round



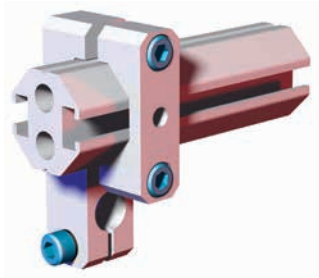
Model Number	Weight
M-60B-25M-M	356g [0.78lbs]

60B-40M (-15E) 60mm Octagon to 40mm or 1.5 in. Round



Model Number	Weight	ØD
M-60B-40M-M	520g [1.15lbs]	40mm
M-60B-15E-M	535g [1.18lbs]	1.5 in.

CLM-30B-50 30mm Octagon to Ø50"(in) Round Transition Bracket Assembly



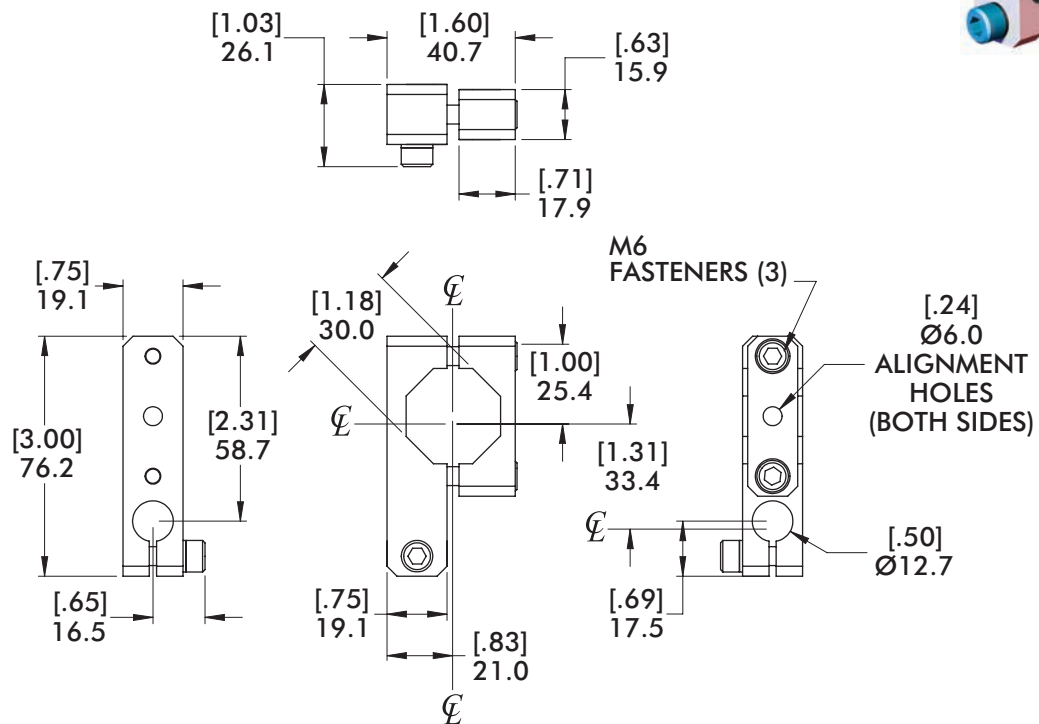
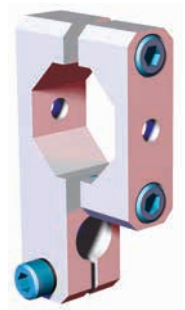
Features:

- Connects BodyBuilder™ extrusion and round tubing perpendicular to each other.
- Lightweight, high-strength aluminum design.

Specifications:

Max. Static Clamp Load:
102 Nm [75 ft-lb]

Material: Aluminum



Model Number	Weight
CPI-CLM-30B-50-TR	.092 kg [.20 lb]