

# ARV AND VSA SERIES VENTURIES

## Vacuum Products | Features and Specifications

### ARV® Series Auto-Release Venturi Cup Mount

#### Requiring (1) air line, (1) valve:

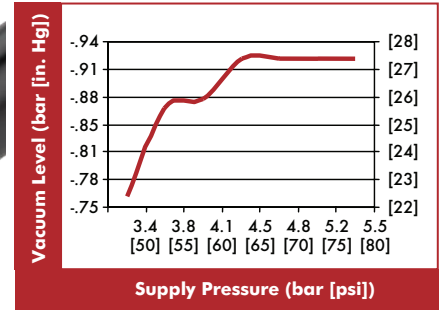
Offers integrated automatic quick panel release and exhaust silencer in one part. Mounting options include right or left hand apple core mounting or no apple core mount for use with DESTACO's spring cup mounts.

The ARV® Series is also available in a block style for remote mounting and each mount can be ordered with Imperial or Metric ports.



Covered under one or more  
U.S./International Patents

#### ARV® Performance:



#### Specifications @ 4 bar [60psi]:

Speed to Vacuum: 0.2-0.3 seconds

Speed to Release: 0.02 seconds

Air Consumption:

Vacuum: 40 l/m [1.4 scfm]

Blow-off: 0

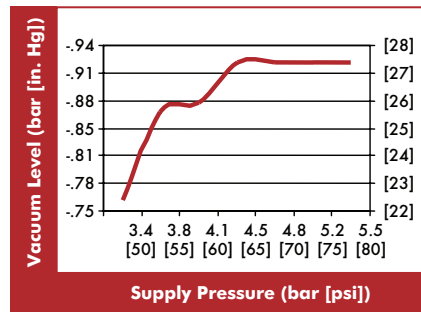
Noise Level (at one meter): 68dBA

Material: Aluminum

### VSA Series Venturi Cup Mount



#### VSA Performance:



#### Specifications @ 4 bar [60psi]:

Speed to Vacuum: .36 seconds

Speed to Release: 0.08 seconds

Air Consumption:

Vacuum: 40 l/m [1.4 scfm]

Blow-off: 2.6 liters [0.09 ft³]

(156 l/m [5.5scfm] @ 1 sec. duration)

Noise Level (At one meter):

Inline to exhaust: 76dBA

Inline to exhaust with Silencer: 68dBA

Material: Aluminum

Blow-off typically requires two air lines and multiple valves. The VSA series offers a low-profile version as shown. Additional options includes silencer and sensor port options. Mounting threads can also be ordered in Imperial or Metric ports.

We also offers PA Series cup mounts.

# ARV SERIES VENTURIES

Vacuum Products | Dimensions | Ordering Information



Left Hand Apple Core  
CPI-VSA-ARVL-750-(X)  
114g [0.25lb]



Right Hand Apple Core  
CPI-VSA-ARVR-750-(X)  
114g [0.25lb]



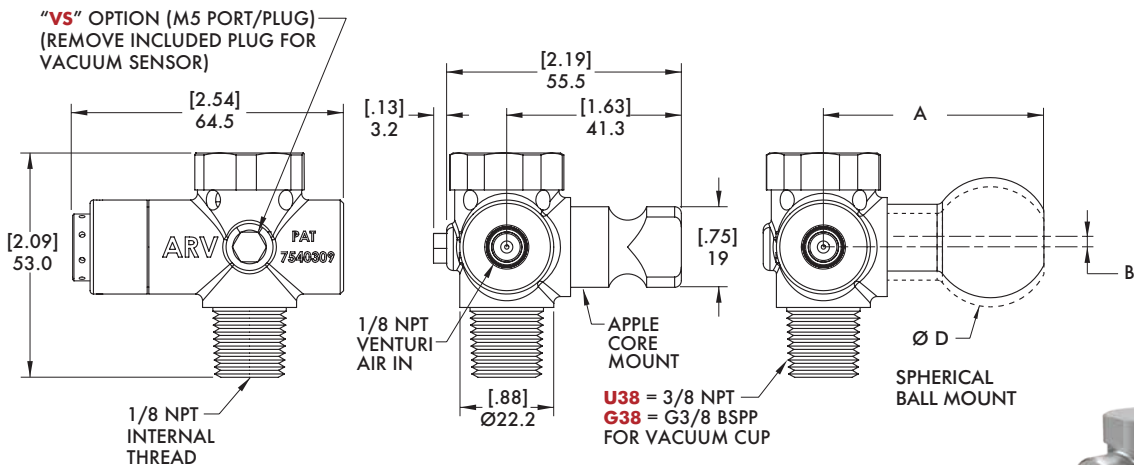
Without Apple Core  
CPI-VSA-ARV-000-(X)  
86g [0.19lb]



RH/LH Spherical Ball  
CPI-VSA-ARV(R/L)-B112-(X)  
CPI-VSA-ARV(R/L)-B32-(X)



(X)  
Mounting  
Thread  
U38 = 3/8"  
NPT Male  
G38 = 3/8"  
G Male



Vacuum Sensor  
Option  
Add "-VS" to  
end of "ARV"  
order code

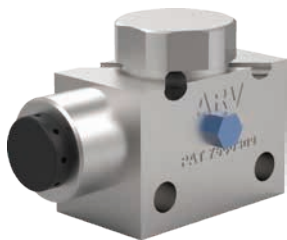


B112-01  
28.58mm ball only  
B112-32-01  
32mm ball only

Covered under one or more U.S./International Patents

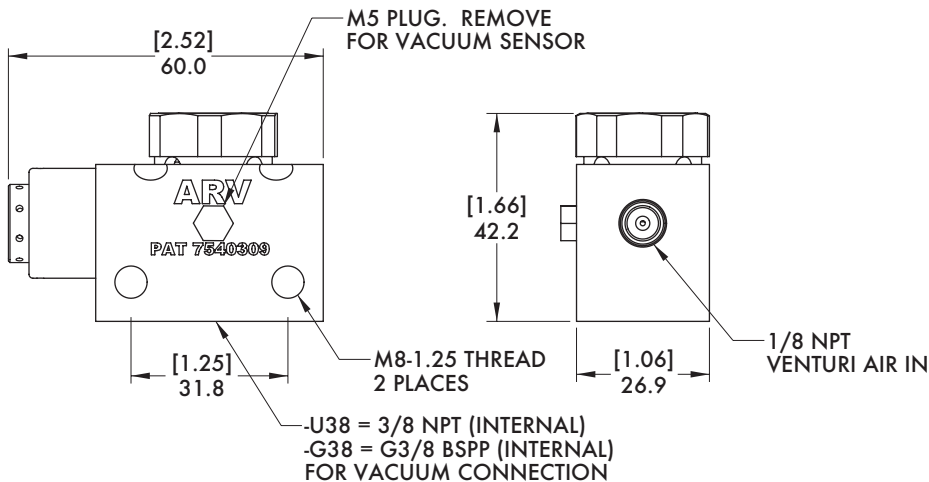
Model Number	A	B	ØD	Weight
CPI-VSA-ARV(R/L)-B112-(X)	[1.85] 47.1	0	[1.13] 28.5	[0.28 lb] 126g
CPI-VSA-ARV(R/L)-B32-(X)	[1.93] 49	[0.12] 3.2	[1.26] 32	[0.30 lb] 134g

## Venturi Style Vacuum Generator Cup Mounts ARV® Block Style Dimensions and Ordering Information



Block Style  
CPI-VSA-ARVR-312-(X)  
(X) = Vacuum Port Thread  
U38 = 3/8" NPT Female  
G38 = 3/8" G Female

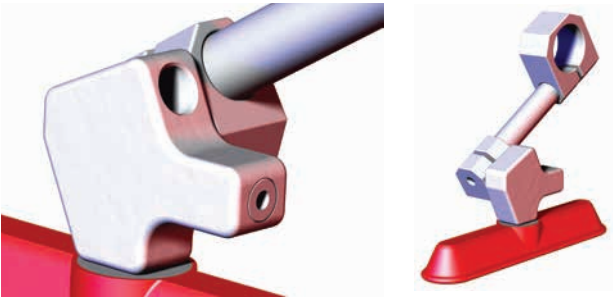
Weight  
104g [0.23lb]



# MICRO TOOLING VENTURI

Vacuum Products | Dimensions | Technical Specifications

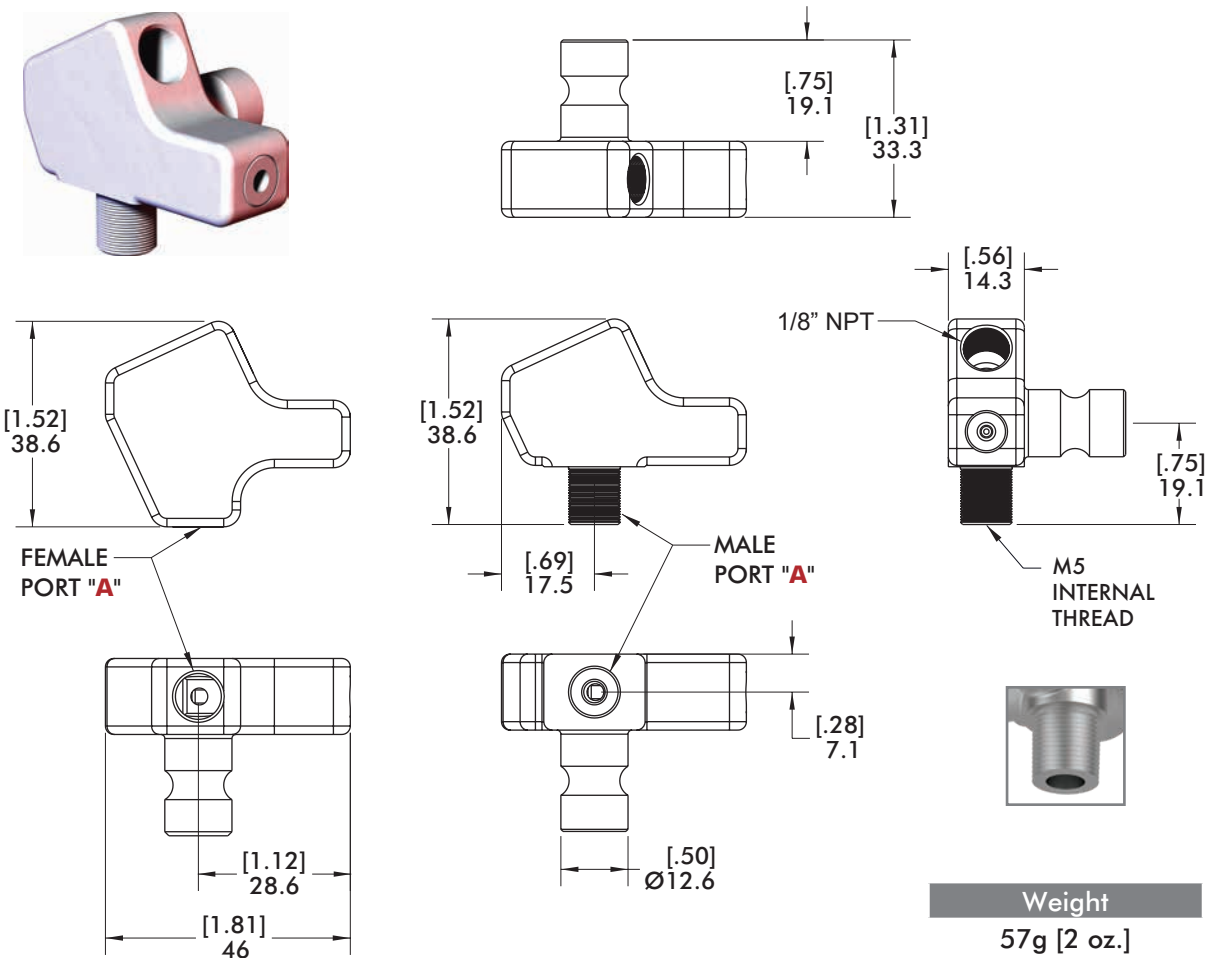
## VSA 500 Series MicroTool Apple Core





- Features:**

  - MicroTool sized venturi.
  - 1/8 NPT, 1/8 G Ports.
- Benefits:**

  - Small and lightweight.
  - Convenient mounts for most small vacuum cups.



500 Series Venturi MicroTool - CPI-VSA-500-"A"

Description		Port A
	Female 1/8" NPT to Female 1/8" NPT	F18
	Female 1/8" NPT to Male 1/8" NPT	M18

Covered under one or more U.S./International Patents

# VSA SERIES VENTURIES

Vacuum Products | Dimensions | Technical Specifications

## VSA Low-Profile 750/19 Series Apple-Core with Blow-Off

### Features:

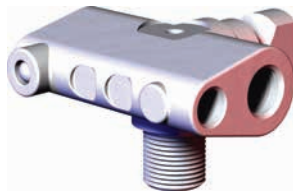
- Low profile construction.
- Integrated blow-off.
- Optional vacuum sensing port.
- Optional exhaust silencer.
- Imperial or Metric ports.

### Benefits:

- Lower tool profile to fit in smaller spaces.
- Quick release of panels.
- Vacuum level or part present sensing.
- Quiet operation.



Low-Profile 750/19 w/  
Blow Off No Options  
CPI-VSA-(X)-BO-LP



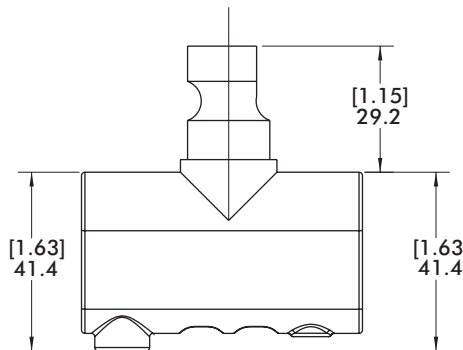
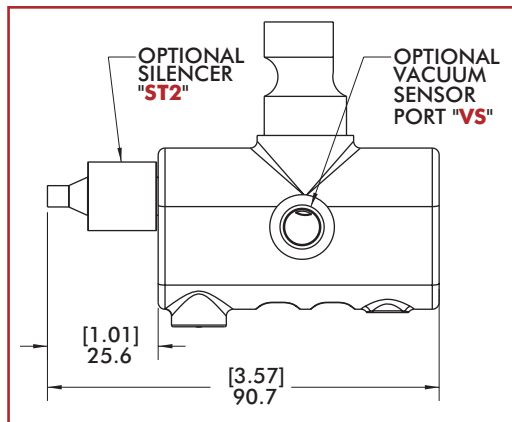
Low-Profile 750/19 with  
Blow Off with Detector Option  
CPI-VSA-(X)-BO-LP-DET



Low-Profile 750/19 with  
Blow Off with "VS" Option  
CPI-VSA-(X)-BO-LP-VS



For Silencer Option;  
add "ST2" to the end  
of order code (as shown).  
CPI-VSA-(X)-BO-LP-VS-ST2

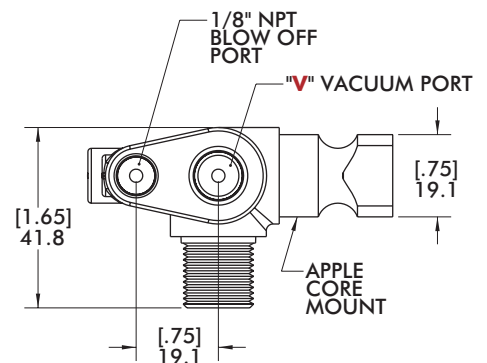
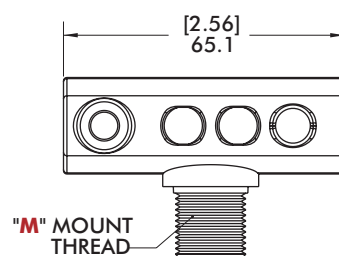
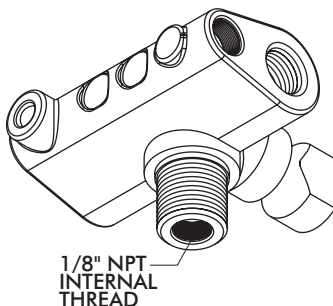


### VS/DET Thread

DET = M5  
VS = 1/8 NPT

### Weight

170g [6 oz.]



### Low Profile 750/19 Series w/blow-off - CPI-VSA-(X)-BO-LP

Version	Mount Thread "M"	Vacuum Port "V"	(X)
Metric	3/8" G Male	1/4" G	19
Imperial	3/8" NPT Male	1/4" NPT	750

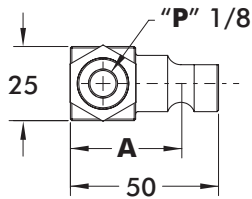
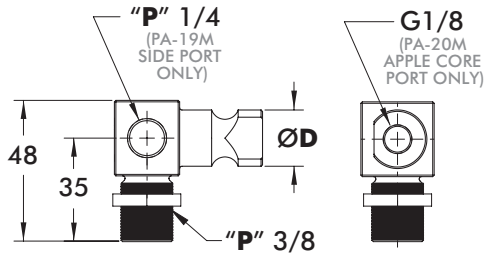
# ACCELERATE® PORT ONLY ADAPTORS

Vacuum Products | Dimensions | Technical Specifications



## PA Series

### Apple Core Mount



PA-19M



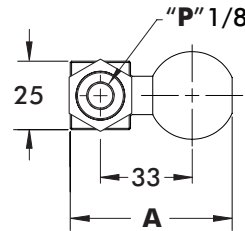
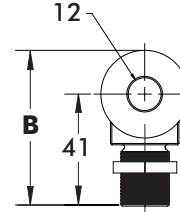
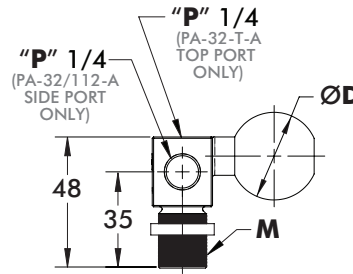
PA-20M

Material: Aluminum  
Load: 150Nm

Weight includes locking nut\*  
and plug (not shown)  
\*Except U38 models

Model Number	A	ØD	P	Weight
PA-19M-G38-A	[1.46] 37	[0.75] 19	G	[0.17 lb] 77g
PA-19M-U38-A			NPT	[0.15 lb] 68g
PA-20M-G38-AC-A	[1.34] 34	[0.79] 20	G	[0.16 lb] 71g

### Ball Mount



PA-B32/B112

PA-B32-G38-T-A

Material: Aluminum  
Load: 150Nm

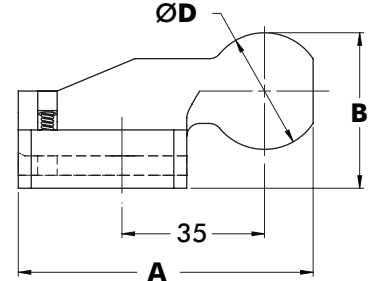
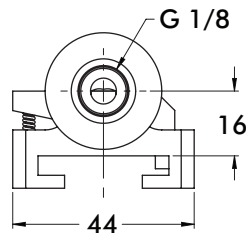
Weight includes locking nut\* and plug  
(not shown) \*Except U38 models

Model Number	A	B	ØD	M	P	Weight
PA-B32-G38-A					G	[0.23 lb] 103g
PA-B32-G38-T-A	[2.32] 59	[2.24] 57	[1.26] 32	G3/8	G	[0.21 lb] 96g
PA-B32-U38-A				3/8 NPT	NPT	[0.21 lb] 94g
PA-B32-G14-A				G1/4	G	[0.21 lb] 95g
PA-B112-G38-A	[2.24] 57	[2.17] 55	[1.12] 28	G3/8	G	[0.20 lb] 89g
PA-B112-U38-A				3/8 NPT	NPT	[0.18 lb] 80g

## PA 28mm - 32mm Ball for C-Mount



Material: Aluminum  
Load: 150Nm

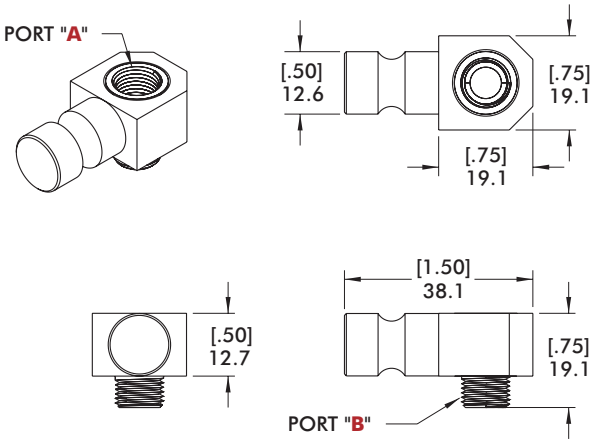


Model Number	A	B	ØD	Weight
CPI-PA-B112-CM	[2.84] 72.1	[1.50] 38.1	[1.13] 28.5	[0.23 lb] 106g
CPI-PA-B32-CM	[2.98] 75.7	[1.69] 42.9	[1.26] 32	[0.27 lb] 122g



# MICRO TOOLING PORT ONLY ADAPTER

Vacuum Products | Dimensions | Technical Specifications

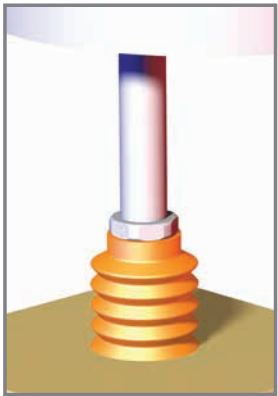
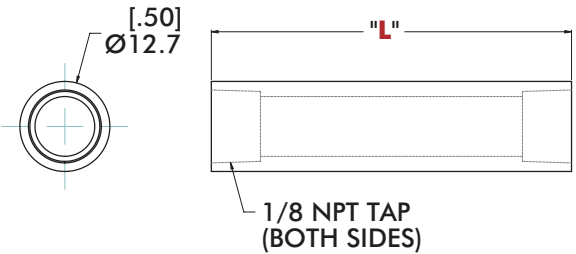
PA 500 Series



## CPI-PA-500-"A"-"B" Ordering Information

Description		A	B	Weight
	Female 1/8" NPT/Female 1/8" NPT	F18	F18	23g [0.8 oz.]
	Female 1/8" G/Female 1/8" G	FG18	FG18	
	Female M5/Female M5	FM5	FM5	
	Female 1/8" NPT/Male 1/8" NPT	F18	M18	
	Female 1/8" G/Male 1/8" G	FG18	MG18	
	Female M5/Male M5	FM5	MM5	

## PAT 1/8 NPT Vacuum Extension



### "L"

#### Standard Lengths

- 02 = 2.00"
- 03 = 3.00"
- 04 = 4.00"
- 05 = 5.00"
- 06 = 6.00"

Model Number	Weight
CPI-PAT-50T-"L"-U18	[0.13 lb/ft] 193.0 g/m

