

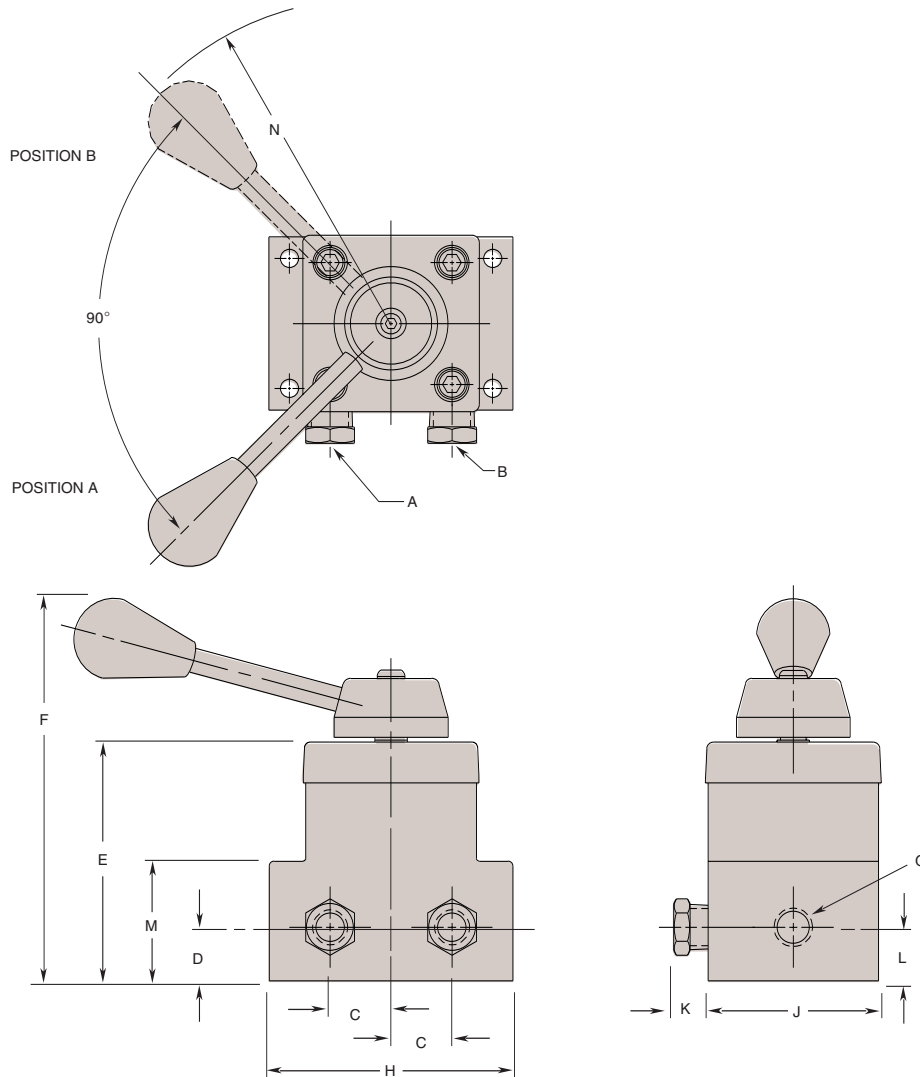
Pump Mounted Control Valve



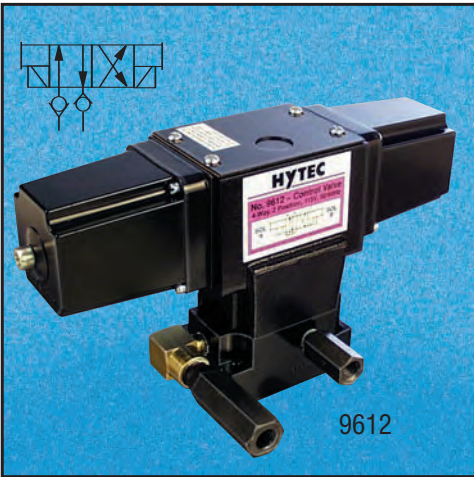
Designed to be used in applications where the pump is located near the operator with the valve mounted directly on the pump. This configuration eliminates the need for pressure and return lines between the pump and remote mounted control valves. It will replace the outlet manifold on most Hytec constant pressure pumps having that feature. (For use with Hytec No. 100178 pump, contact Hytec Technical Services.) One pump/valve combination is required for each circuit to be controlled.

Features:

- 3-way/4-way, 2-position, detented
- Manually operated
- Pump mounted
- Handle swings 90° and can be repositioned in 22.5° intervals
- Single- or double-acting systems
- ¼" NPTF reducer bushing
- Includes mounting hardware, return tube
- 5,000 psi max.
- 5 gpm max.



| Cat. No. | Dimensions (In Inches) | | | | | | | | | | | | |
|----------|------------------------|--------|------|------|-------|-------|--------------|-------|-------|------|------|-------|--------|
| | A Port | B Port | C | D | E | F | G Gauge-Port | H | J | K | L | M | N Rad. |
| 9504 | ¼ NPTF | ¼ NPTF | .937 | .750 | 3.188 | 5.562 | ¼ NPTF | 3.750 | 2.660 | .531 | .812 | 1.437 | 5.031 |



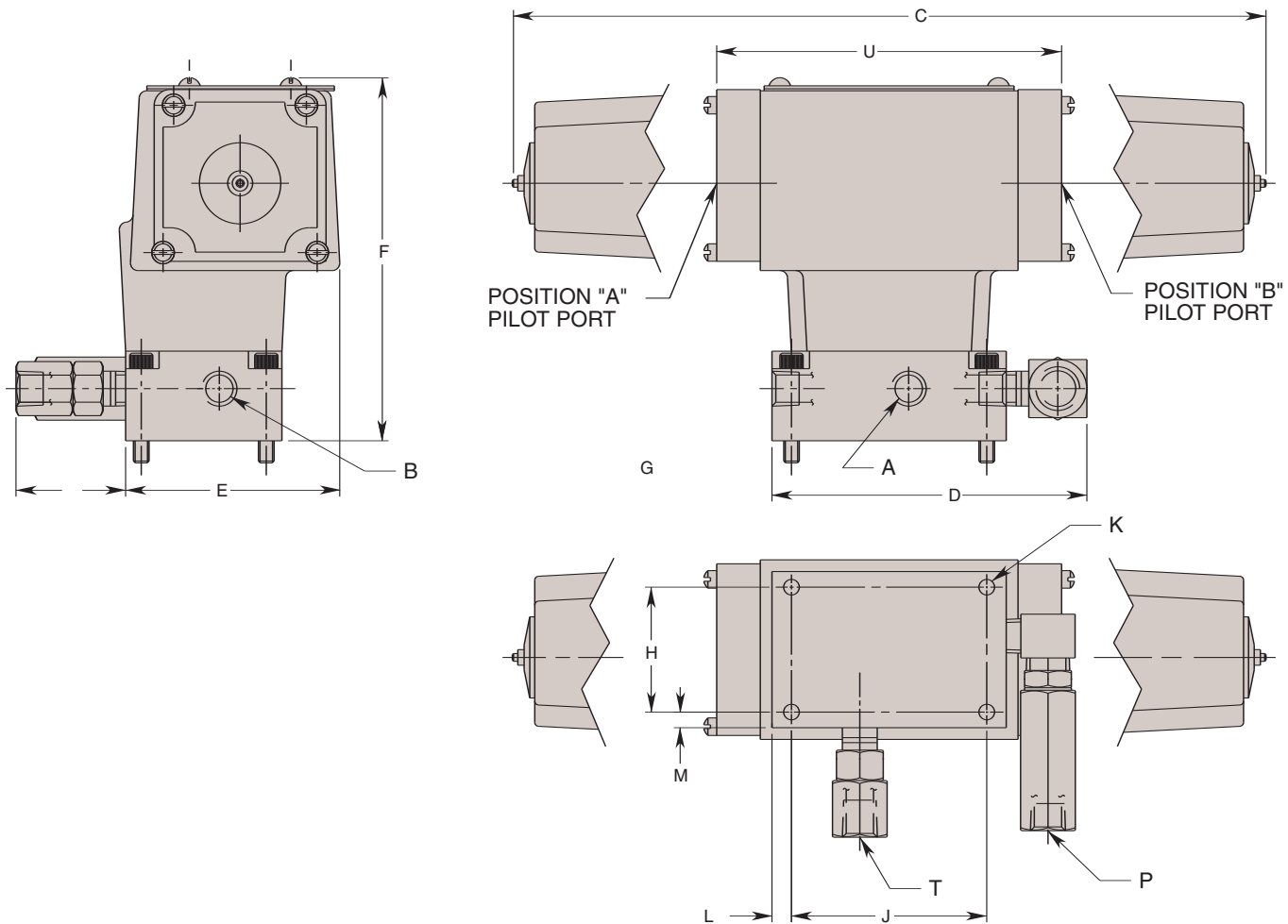
Designed for applications where the valve can be mounted remotely from the pump and where electrical operation is required.

Detented action needs only a momentary signal to shift valve positions. Electrical power interruption won't cause the valve to shift and release clamping pressure or pressurize the system unexpectedly.

Features:

- 3-way/4-way, 2-position, detented
- Electrically operated; continuous duty rated
- Remote mounted
- Single- or double-acting systems
- 5,000 psi max.; 1,000 psi max. return line pressure
- 5 gpm max.
- Includes mounting hardware: ¼-20 UNC X 1.5" cap screws (4)
- Tank port check valve included to prevent return line back pressure from actuating released single-acting components, or causing pressure fluctuations in double-acting systems.

Remote Mounted Control Valves



| Cat. No. | Specifications | Dimensions (In Inches) | | | | | | | | | | | | | | | | |
|----------|--|------------------------|----------|-----------------------|-----------------------|--------|-------|-------|-------|-------|-------|-------|--------|------|------|----------|----------|-------|
| | | "A" Port | "B" Port | Position A Pilot Port | Position B Pilot Port | C | D | E | F | G | H | J | K Dia. | L | M | "P" Port | "T" Port | U |
| 9612 | 115 VAC, 50/60 Hz 5.3 Amps inrush, .6 Amps holding | | | | | | | | | | | | | | | | | |
| 9573 | 24 VAC, 50/60 Hz 25.4 Amps inrush, 2.8 Amps holding | ¼ NPTF | ¼ NPTF | — | — | 12.062 | 5.000 | 3.375 | 5.812 | 2.500 | 2.000 | 3.125 | .281 | .312 | .250 | ¼ NPTF | ¼ NPTF | — |
| 9574 | 230 VAC, 50/60 Hz 2.8 Amps inrush, .31 Amps holding | | | | | | | | | | | | | | | | | |
| 9611 | 50 psi min./150 psi max. air pressure | | | ¼ NPTF | ¼ NPTF | — | | | | | | | | | | | | 6.125 |