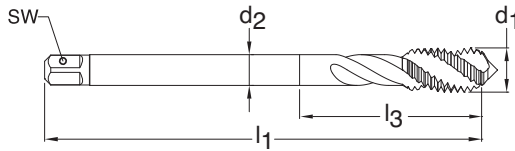


METRIC FINE



Series 834
Standard DIN 374
Tool Material HSS-E (Cobalt)
Spiral Flute 40° Helix
Chamfer Form C • 2-3
Class of Fit ISO 2(6H)



Blind holes



Bright finish



External cooling

d1 - P	D Limits	Tap Drill Range mm	Number of Flutes	d2 mm	SW mm	l1 mm	l3 mm	Order Code	EDP Number	Stock
M4 X 0.50	D3/D4	3.459 - 3.599	3	2.80	2.10	63.00	N/A	4.003	9008340040030	○
M5 X 0.50	D3/D4	4.459 - 4.599	3	3.50	2.70	70.00	N/A	5.003	9008340050030	○
M6 X 0.50	D3/D4	5.460 - 5.600	3	4.50	3.40	80.00	N/A	6.003	9008340060030	●
M6 X 0.75	D3/D4	5.188 - 5.378	3	4.50	3.40	80.00	N/A	6.004	9008340060040	○
M8 X 0.75	D3/D4	7.188 - 7.378	3	6.00	4.90	80.00	N/A	8.004	9008340080040	○
M8 X 1.00	D4/D5	6.917 - 7.153	3	6.00	4.90	90.00	N/A	8.005	9008340080050	○
M10 X 1.00	D4/D5	8.917 - 9.153	3	7.00	5.50	90.00	N/A	10.005	9008340100050	○
M10 X 1.25	D4/D5	8.647 - 8.912	3	7.00	5.50	100.00	N/A	10.006	9008340100060	○
M12 X 1.00	D4/D5	10.917 - 11.153	3	9.00	7.00	100.00	N/A	12.005	9008340120050	●
M12 X 1.25	D4/D5	10.647 - 10.912	3	9.00	7.00	100.00	N/A	12.006	9008340120060	●
M12 X 1.50	D4/D5	10.376 - 10.676	3	9.00	7.00	100.00	N/A	12.007	9008340120070	●
M14 X 1.00	D4/D5	12.917 - 13.153	3	11.00	9.00	100.00	N/A	14.005	9008340140050	○
M14 X 1.25	D4/D5	12.647 - 12.912	3	11.00	9.00	100.00	N/A	14.006	9008340140060	●
M14 X 1.50	D4/D5	12.376 - 12.676	3	11.00	9.00	100.00	N/A	14.007	9008340140070	●
M16 X 1.00	D4/D5	14.917 - 15.153	3	12.00	9.00	100.00	N/A	16.005	9008340160050	○
M16 X 1.50	D4/D5	14.376 - 14.676	3	12.00	9.00	100.00	N/A	16.007	9008340160070	●
M18 X 1.00	D4/D5	16.917 - 17.153	4	14.00	11.00	110.00	N/A	18.005	9008340180050	●
M18 X 1.50	D4/D5	16.376 - 16.676	4	14.00	11.00	110.00	N/A	18.007	9008340180070	○
M20 X 1.50	D6/D7	18.376 - 18.676	4	16.00	12.00	125.00	N/A	20.007	9008340200070	●
M22 X 1.50	D6/D7	20.376 - 20.676	4	18.00	14.50	125.00	N/A	22.007	9008340220070	●
M24 X 1.50	D6/D7	22.376 - 22.676	4	18.00	14.50	140.00	N/A	24.007	9008340240070	●
M24 X 2.00	D6/D7	21.835 - 22.210	4	18.00	14.50	140.00	N/A	24.008	9008340240080	○
M26 X 1.50	D7/D8	24.790 - 24.380	4	18.00	14.50	140.00	N/A	26.007	9008340260070	○
M27 X 1.50	D7/D8	25.376 - 25.676	4	20.00	16.00	140.00	N/A	27.007	9008340270070	○
M27 X 2.00	D7/D8	24.835 - 25.210	4	20.00	16.00	140.00	N/A	27.008	9008340270080	●
M30 X 1.50	D7/D8	28.376 - 28.676	4	22.00	18.00	150.00	N/A	30.007	9008340300070	○
M30 X 2.00	D7/D8	27.835 - 28.210	4	22.00	18.00	150.00	N/A	30.008	9008340300080	○

General Purpose