

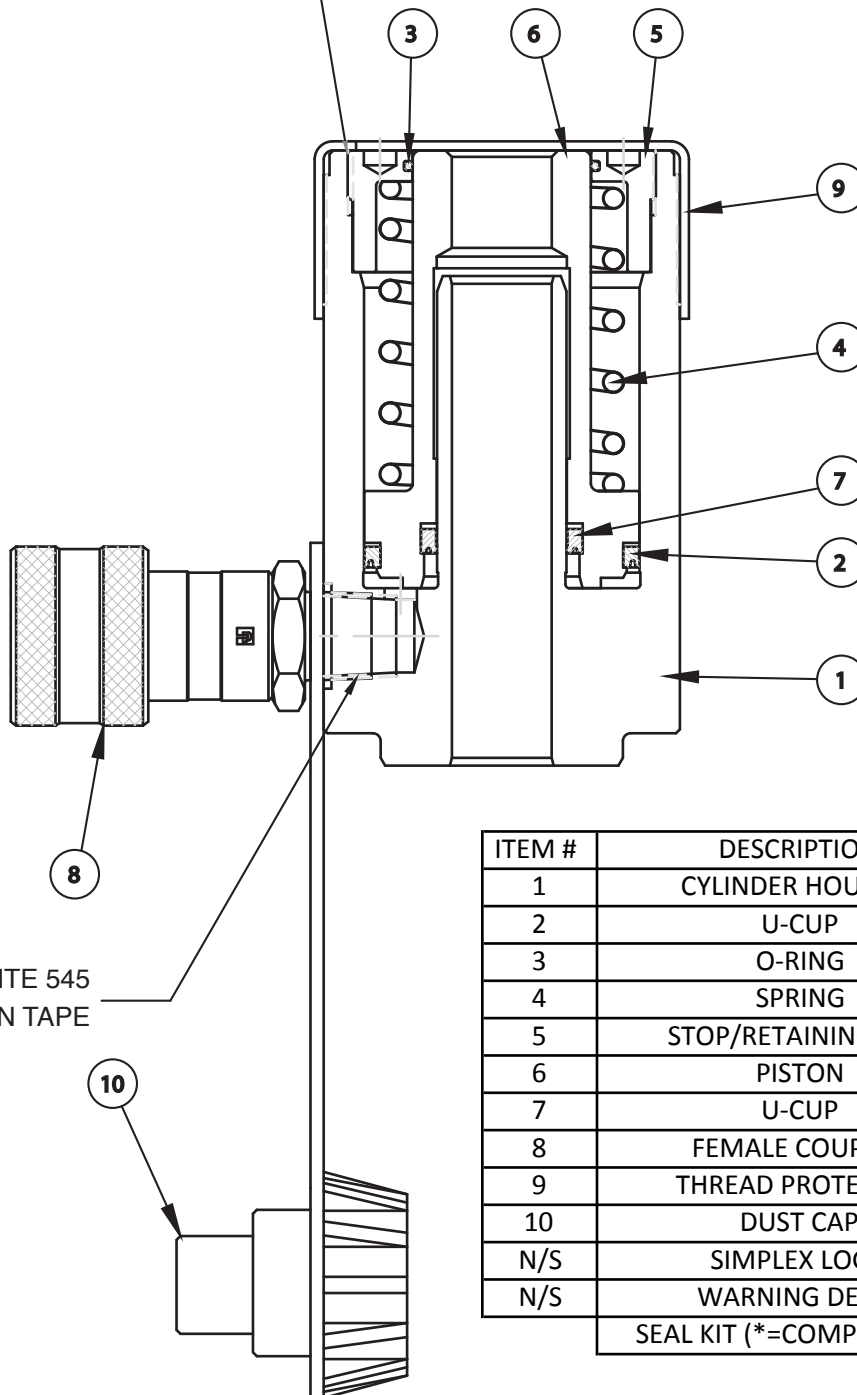


www.tksimplex.com

Technical Repair Parts Sheet Model # RC121A Single Acting Center Hole

Part Sheet Number	Revision Number	Date Code Range	Document Date
54631	B	n/a	3/15

SECURE STOP NUT
PER EES 115-16



ITEM #	DESCRIPTION	PART NUMBER
1	CYLINDER HOUSING	N/A
2	U-CUP	*
3	O-RING	*
4	SPRING	6110357
5	STOP/RETAINING NUT	6110358
6	PISTON	46598
7	U-CUP	*
8	FEMALE COUPLER	40858
9	THREAD PROTECTOR	85924
10	DUST CAP	CR215
N/S	SIMPLEX LOGO	88187
N/S	WARNING DECAL	*
	SEAL KIT (*=COMPONENTS)	54642

! To Maintain Your Warranty
Have your products inspected and repaired by an Authorized Simplex Service Center
Visit www.tksimplex.com to locate the nearest one. **!**