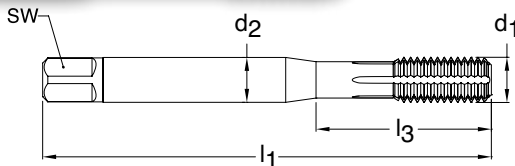


UNC



Through holes



Blind holes

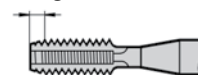


TiN coated



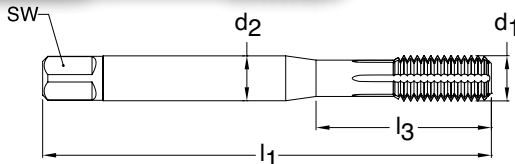
External cooling

Series 3940
Standard ANSI
Tool Material HSS-E (Cobalt)
Flute Oil grooves
Chamfer Form C • 2-3
Class of Fit 2BX



d1 - P	H Limits	Tap Drill Range inch	Number of Flutes	d2 inch	SW inch	l1 inch	l3 inch	Order Code	EDP Number	Stock
4-40	H4/H5	0.100 - 0.102	4	0.141	0.110	1.882	0.709	2.845	9039400028450	●
5-40	H4/H5	0.114 - 0.116	4	0.141	0.110	1.941	0.709	3.175	9039400031750	●
6-32	H5/H6	0.124 - 0.126	4	0.141	0.110	2.000	0.709	3.505	9039400035050	●
8-32	H5/H6	0.149 - 0.150	4	0.168	0.131	2.130	0.827	4.166	9039400041660	●
10-24	H6/H7	0.171 - 0.173	4	0.194	0.152	2.382	0.945	4.826	9039400048260	●
12-24	H6/H7	0.196 - 0.198	4	0.220	0.165	2.382	1.024	5.486	9039400054860	●
1/4-20	H7/H8	0.225 - 0.228	5	0.255	0.191	2.500	1.181	6.350	9039400063500	●
5/16-18	H8/H9	0.286 - 0.290	5	0.318	0.238	2.721	1.377	7.938	9039400079380	●
3/8-16	H8/H9	0.345 - 0.350	5	0.381	0.286	2.941	1.456	9.525	9039400095250	●
7/16-14	H9/H10	0.404 - 0.408	5	0.323	0.242	3.161	N/A	11.113	9039400111130	●
1/2-13	H10/H11	0.463 - 0.468	5	0.367	0.275	3.382	N/A	12.700	9039400127000	●
9/16-12	H10/H11	0.523 - 0.527	6	0.429	0.322	3.591	N/A	14.288	9039400142880	●
5/8-11	H11/H12	0.582 - 0.587	6	0.480	0.360	3.811	N/A	15.875	9039400158750	●
3/4-10	H12/H13	0.703 - 0.708	6	0.590	0.442	4.252	N/A	19.050	9039400190500	●

UNF



Through holes



Blind holes

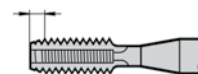


TiN coated



External cooling

Series 3941
Standard ANSI
Tool Material HSS-E (Cobalt)
Flute Oil grooves
Chamfer Form C • 2-3
Class of Fit 2BX



d1 - P	H Limits	Tap Drill Range inch	Number of Flutes	d2 inch	SW inch	l1 inch	l3 inch	Order Code	EDP Number	Stock
4-48	H4/H5	0.102 - 0.103	4	0.141	0.110	1.882	0.709	2.845	9039410028450	●
5-44	H4/H5	0.114 - 0.115	4	0.141	0.110	1.941	0.709	3.175	9039410031750	●
6-40	H5/H6	0.126 - 0.128	4	0.141	0.110	2.000	0.709	3.505	9039410035050	●
8-36	H4/H5	0.151 - 0.153	4	0.168	0.131	2.130	0.827	4.166	9039410041660	●
10-32	H5/H6	0.174 - 0.178	4	0.194	0.152	2.382	0.945	4.826	9039410048260	●
12-28	H6/H7	0.198 - 0.202	4	0.220	0.165	2.382	1.024	5.486	9039410054860	●
1/4-28	H6/H7	0.233 - 0.236	5	0.255	0.191	2.500	1.181	6.350	9039410063500	●
5/16-24	H7/H8	0.292 - 0.295	5	0.318	0.238	2.721	1.377	7.938	9039410079380	●
3/8-24	H7/H8	0.355 - 0.358	5	0.381	0.286	2.941	1.456	9.525	9039410095250	●
7/16-20	H8/H9	0.413 - 0.417	5	0.323	0.242	3.161	N/A	11.113	9039410111130	●
1/2-20	H8/H9	0.476 - 0.480	6	0.367	0.275	3.382	N/A	12.700	9039410127000	●
9/16-18	H8/H9	0.535 - 0.540	6	0.429	0.322	3.591	N/A	14.288	9039410142880	●
5/8-18	H9/H10	0.599 - 0.603	6	0.480	0.360	3.811	N/A	15.875	9039410158750	●
3/4-16	H10/H11	0.719 - 0.727	7	0.590	0.442	4.252	N/A	19.050	9039410190500	●