



Post Office Box 97  
 Benton Harbor, Michigan  
 Ph: 269/926-6171  
 Fax: 269/925-8288

PART NUMBER: STD112  
 REVISION: F

# Product Specifications

Model Number	MAX. PRESS.		MAX. SPEED	HP	kW	Net Wt.	
	bar.	PSI				lbs.	kg
1AM-NRV-56	7.0	100	10,000 RPM	.42	0.30	2	0.9
1AM-NRV-60	7.0	100	10,000 RPM	.42	0.30	2	0.9

SOUND LEVEL 78 dba MAX.

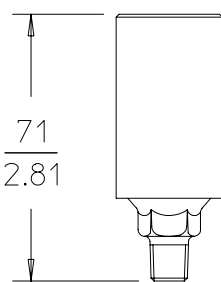
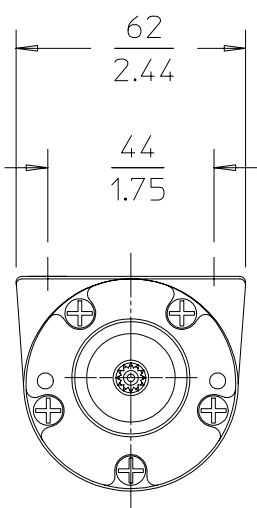
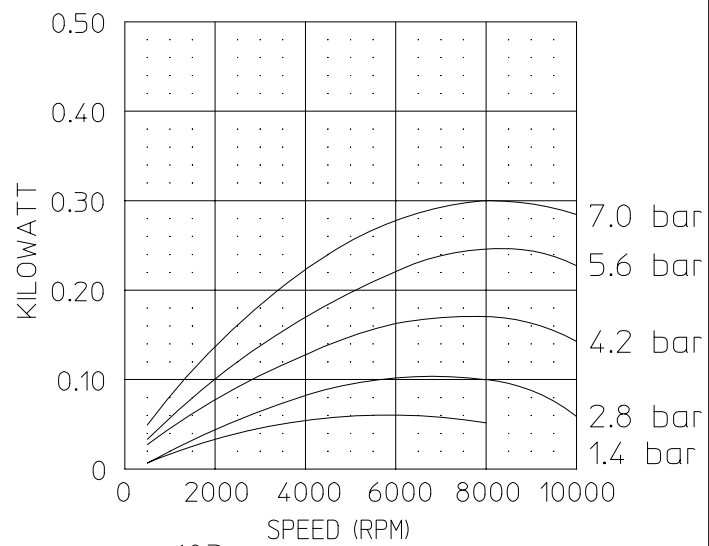
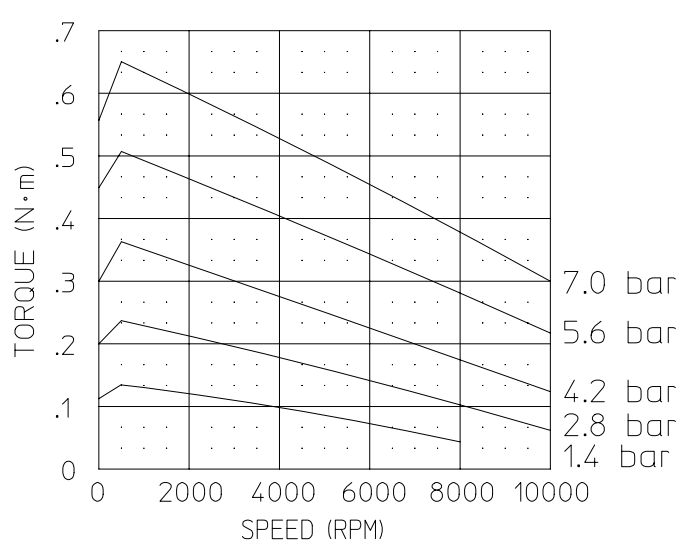
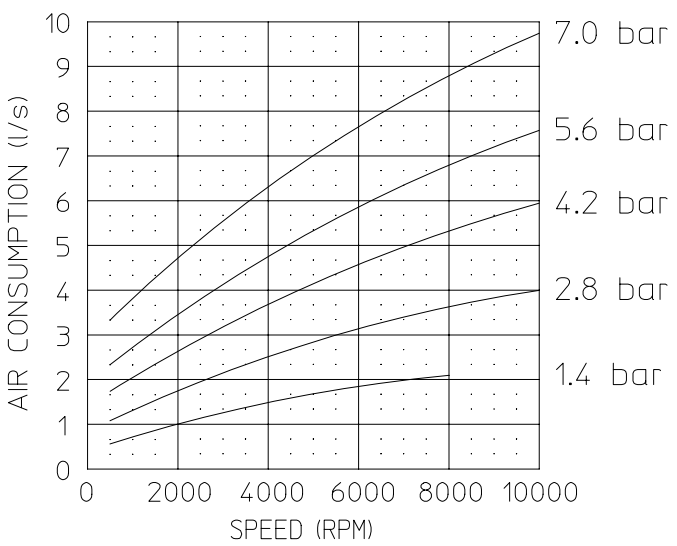
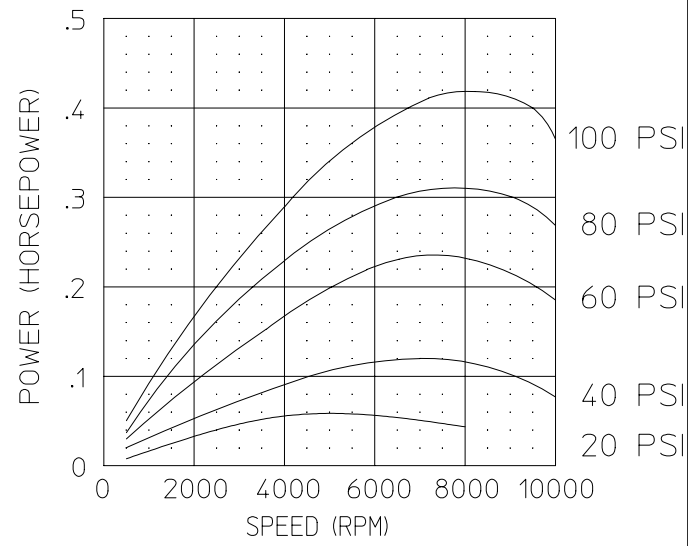
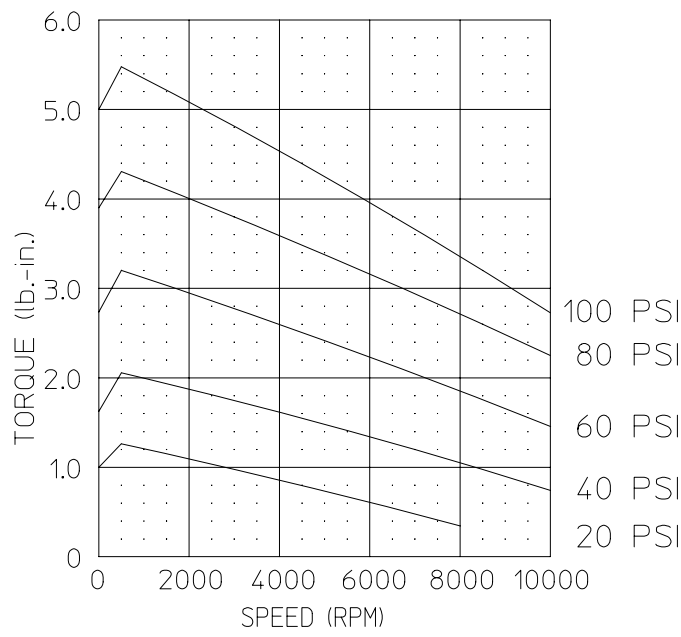
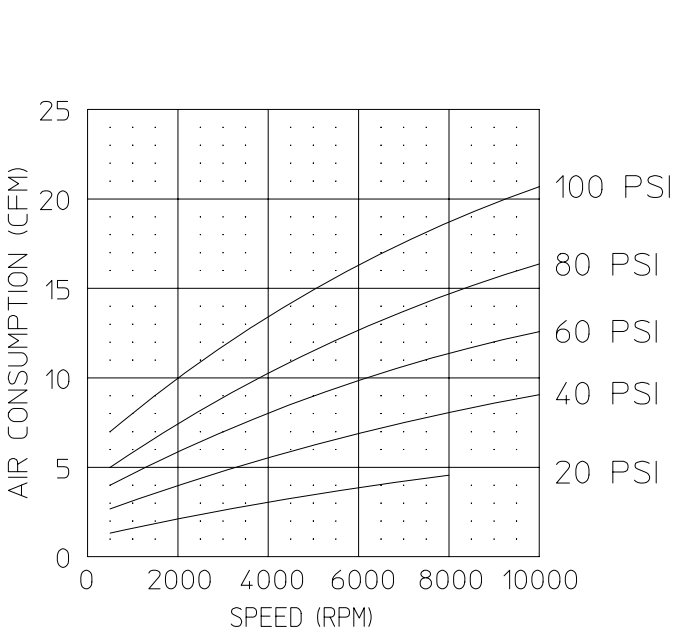
NORMAL AMBIENT +1°C. - 120°C.

RELATIVE HUMIDITY 0% - 100%

ENVIRONMENT HAZARDOUS AMBIENT COMBUSTIBLE  
GAS AND DUST +1°C TO +40°C

TECHNICAL DATA SUBJECT TO CHANGE WITHOUT NOTICE.

CONFORMS TO EUROPEAN STANDARD EN13463-1 NON-ELECTRICAL EQUIPMENT FOR EXPLOSIVE ATMOSPHERES GROUP II CAT. 2 (GAS AND DUST) PROTECTED BY CONSTRUCTION (SURFACE TEMP. RATED 135°C)



MUFFLER ASM. (UNATTACHED)

