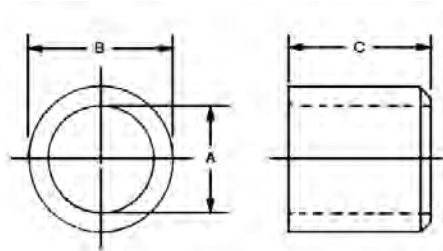


## Locating Pin Liners



• Material: 52100 Steel

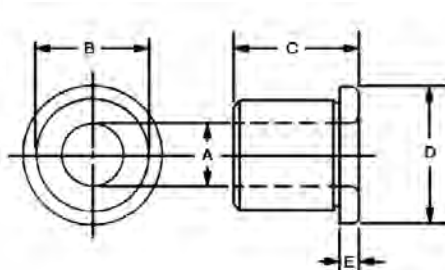


Part Number	A	B	C	Wt. (lbs) 10 Pcs.
28501	.3129 .3126	.5017 .5014	1/2	.16
28502	.5005 .5002	.7518 .7515	3/4	.47
28503	.7506 .7503	1.0018 1.0015	1	.94
28504	1.0007 1.0004	1.3772 1.3768	1 3/8	2.80

## Locating Pin Shoulder Liners



• Material: 52100 Steel

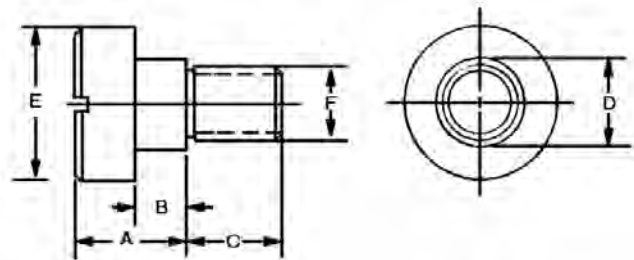


Part Number	A	B	C	D	E	Wt. (lbs) 10 Pcs.
40901	.3129 .3126	.5017 .5014	1/2	5/8	3/32	.16
40902	.5005 .5002	.7518 .7515	3/4	7/8	3/32	.47
40903	.7506 .7503	1.0018 1.0015	1	1 1/8	1/8	.94
40904	1.0007 1.0004	1.3772 1.3768	1 3/8	1 1/2	1/8	2.65

## Locating Pin Lock Screws



- Material: Low Carbon Steel
- Finish: Black Oxide
- Heat Treat: Case Hardened
- Thread: 2A-UNC



Part Number	A	B	C	D	E	F	Wt. (lbs) 10 Pcs.
10101	1/4	.135	3/8	3/8	5/8	5/16-18	.16